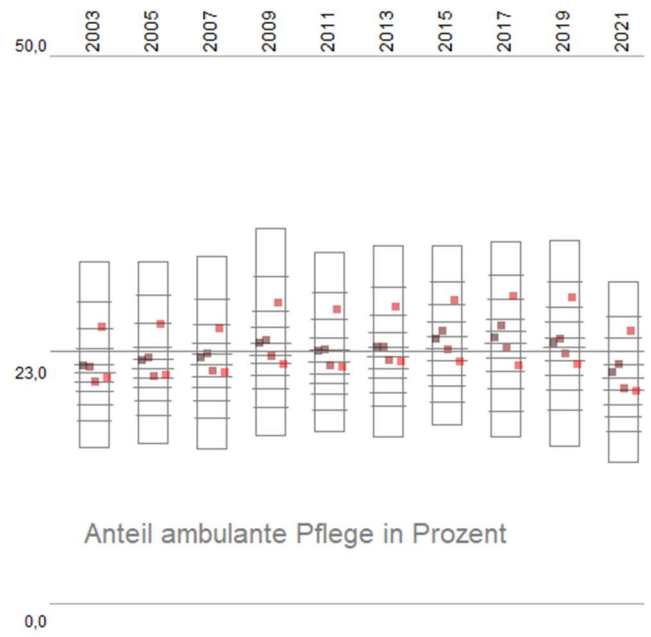
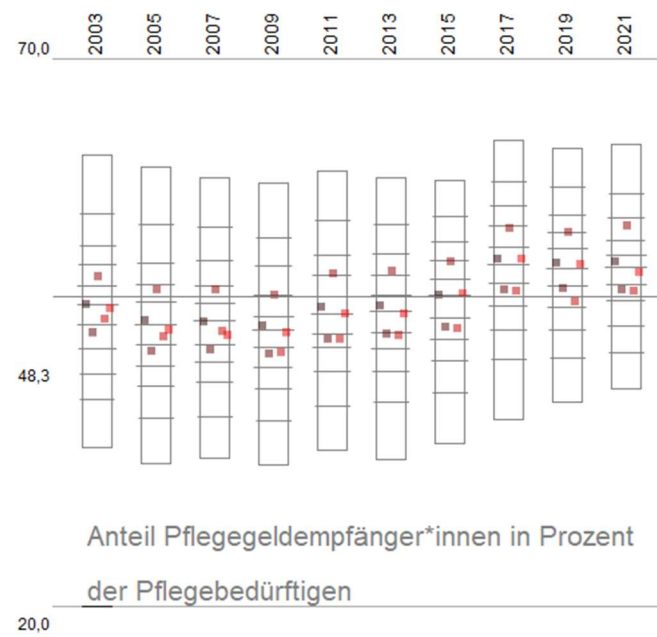
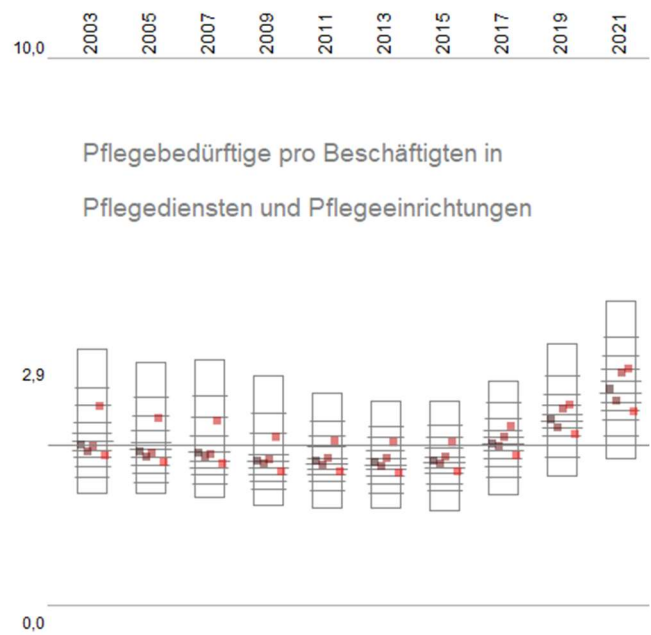
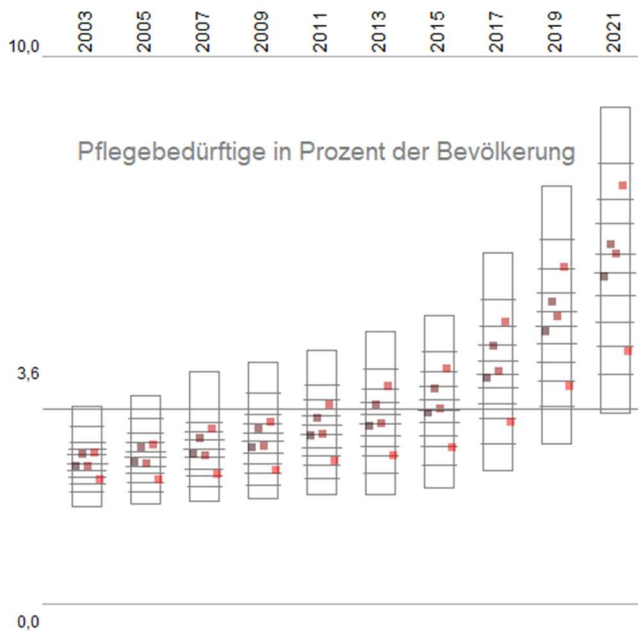


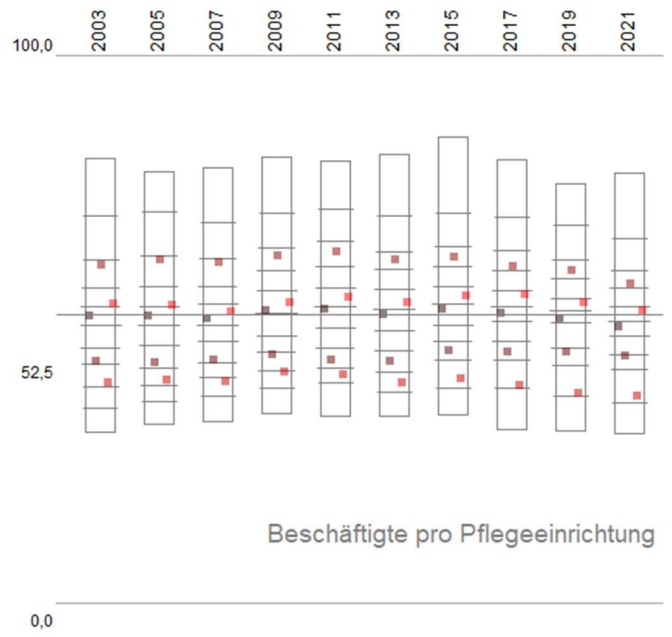
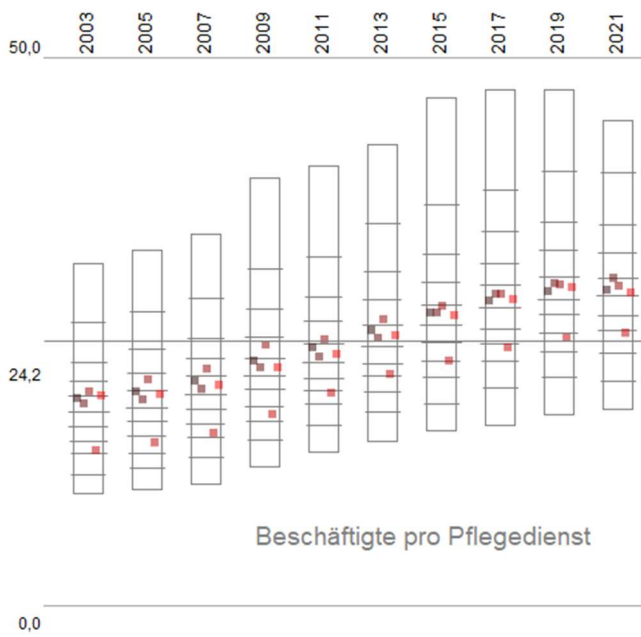
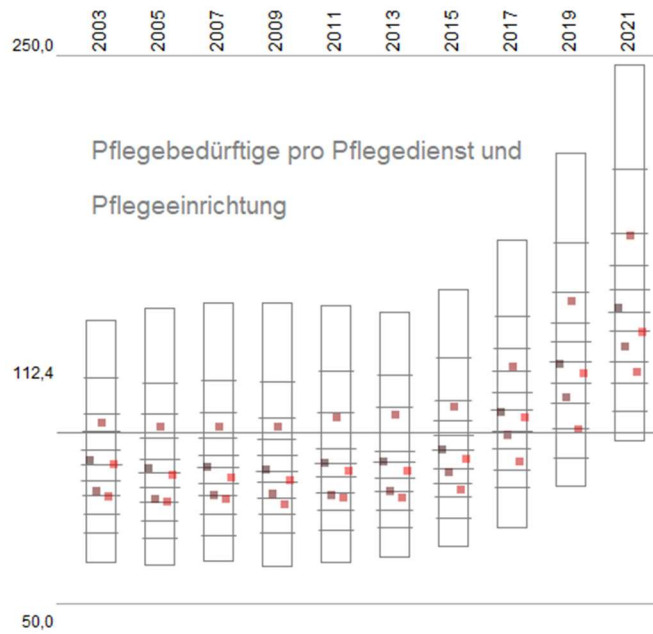
# Pflegebedürftige

[www.rankingweb.de](http://www.rankingweb.de) Datengrundlage: [www.regionalstatistik.de](http://www.regionalstatistik.de) by-2-0 - GovData



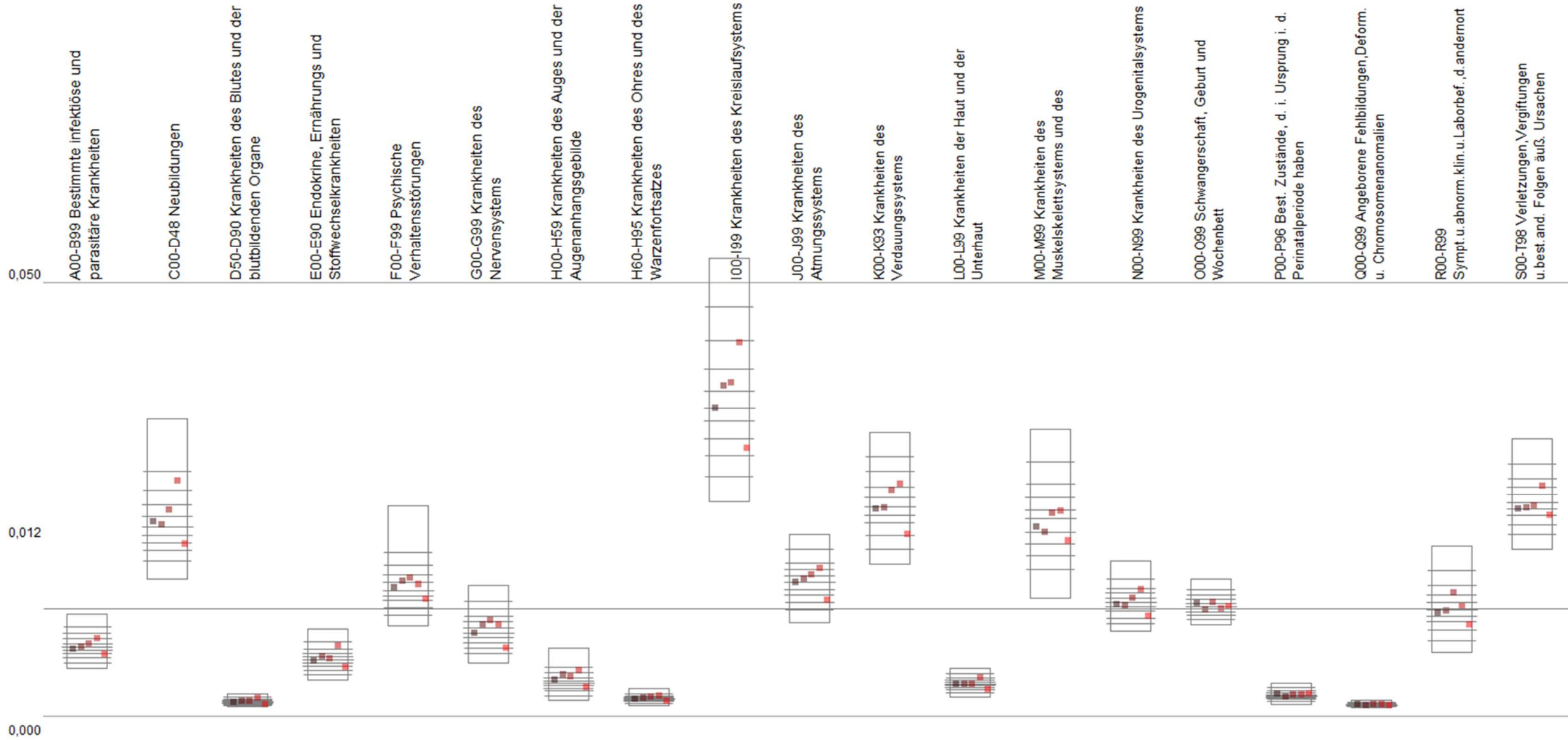
# Pflegedienste und Pflegeeinrichtungen

[www.rankingweb.de](http://www.rankingweb.de) Datengrundlage: [www.regionalstatistik.de](http://www.regionalstatistik.de) by-2-0 - GovData



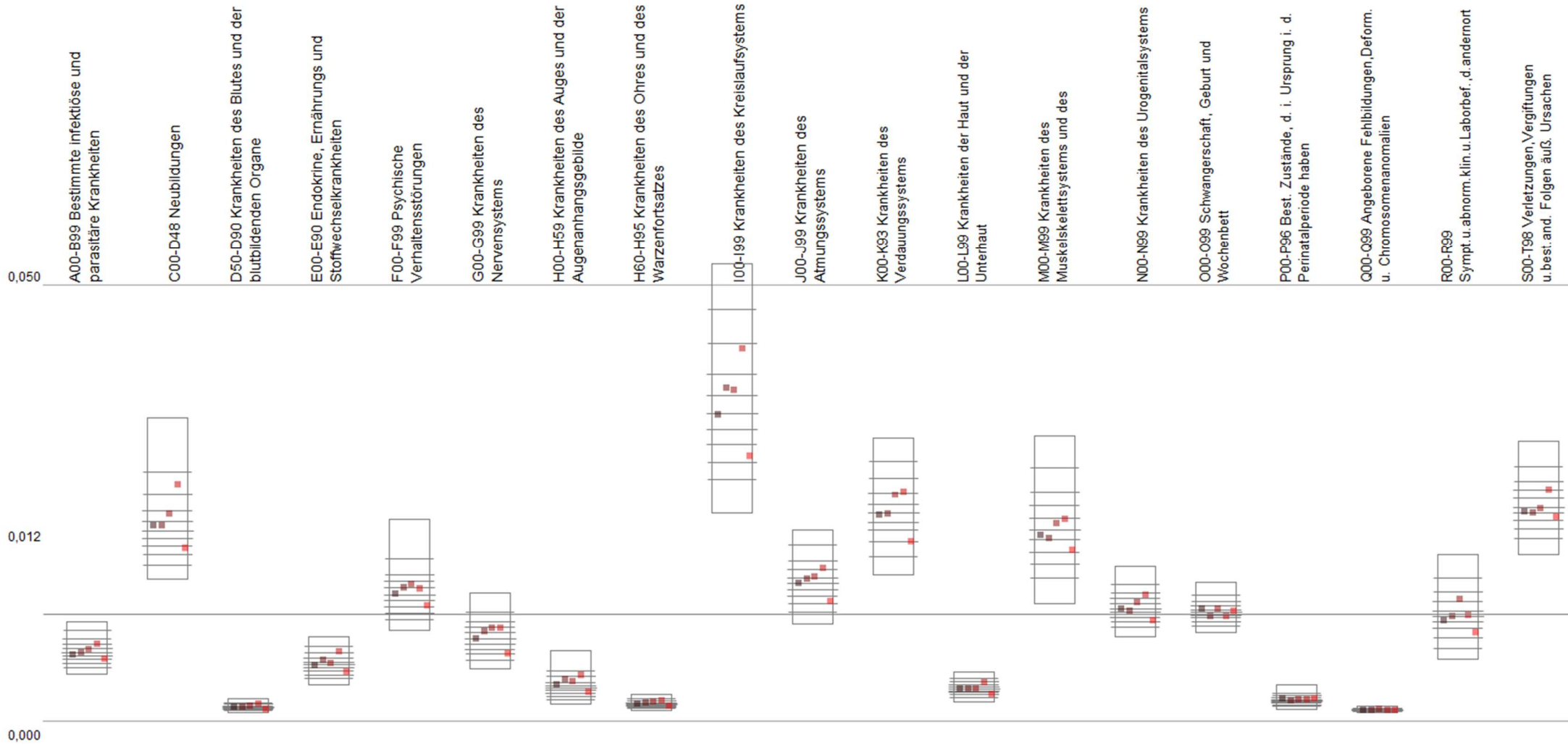
# Vollstationäre Hospitalisierungen nach Hauptdiagnose 2016

[www.rankingweb.de](http://www.rankingweb.de) Datengrundlage: [www.regionalstatistik.de](http://www.regionalstatistik.de) by-2-0 - GovData



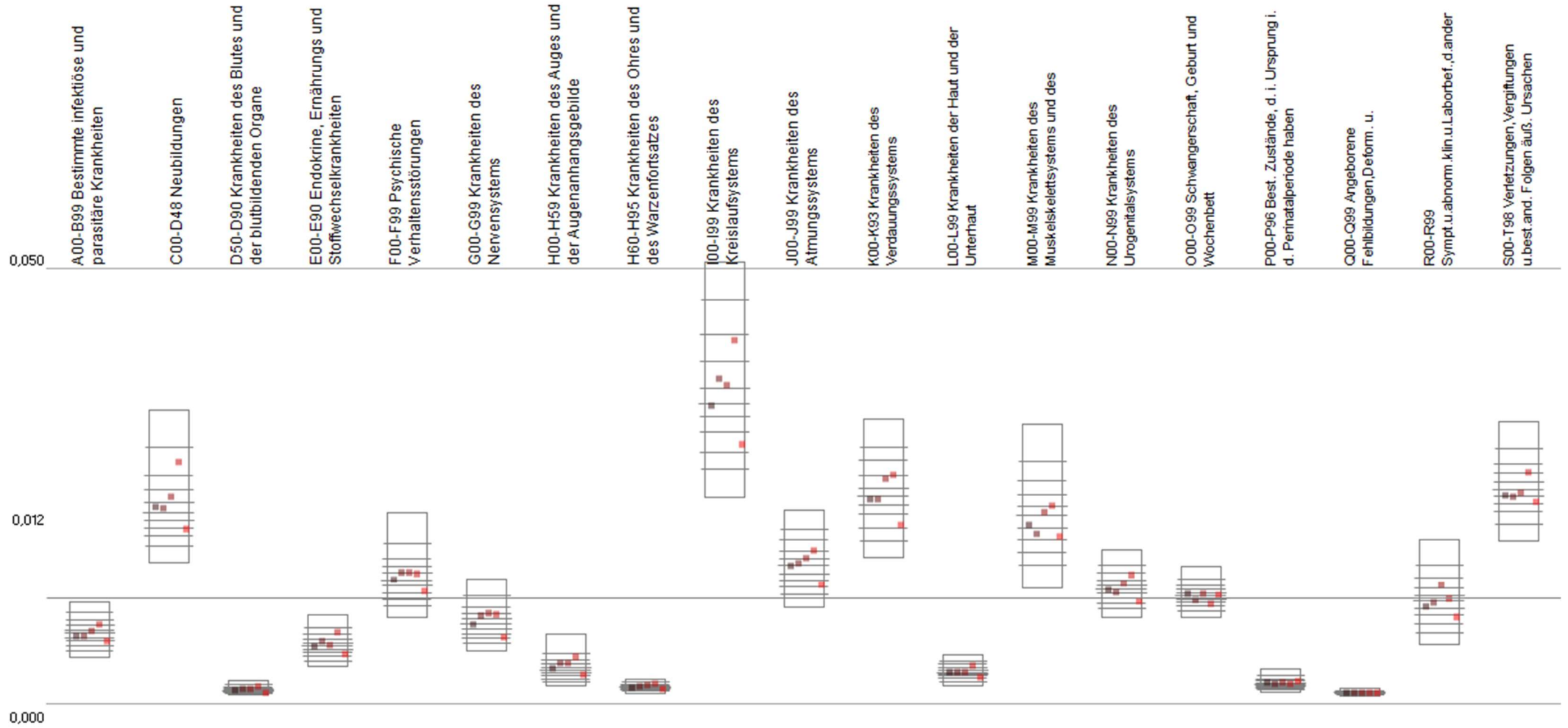
# Vollstationäre Hospitalisierungen nach Hauptdiagnose 2017

[www.rankingweb.de](http://www.rankingweb.de) Datengrundlage: [www.regionalstatistik.de](http://www.regionalstatistik.de) by-2-0 - GovData



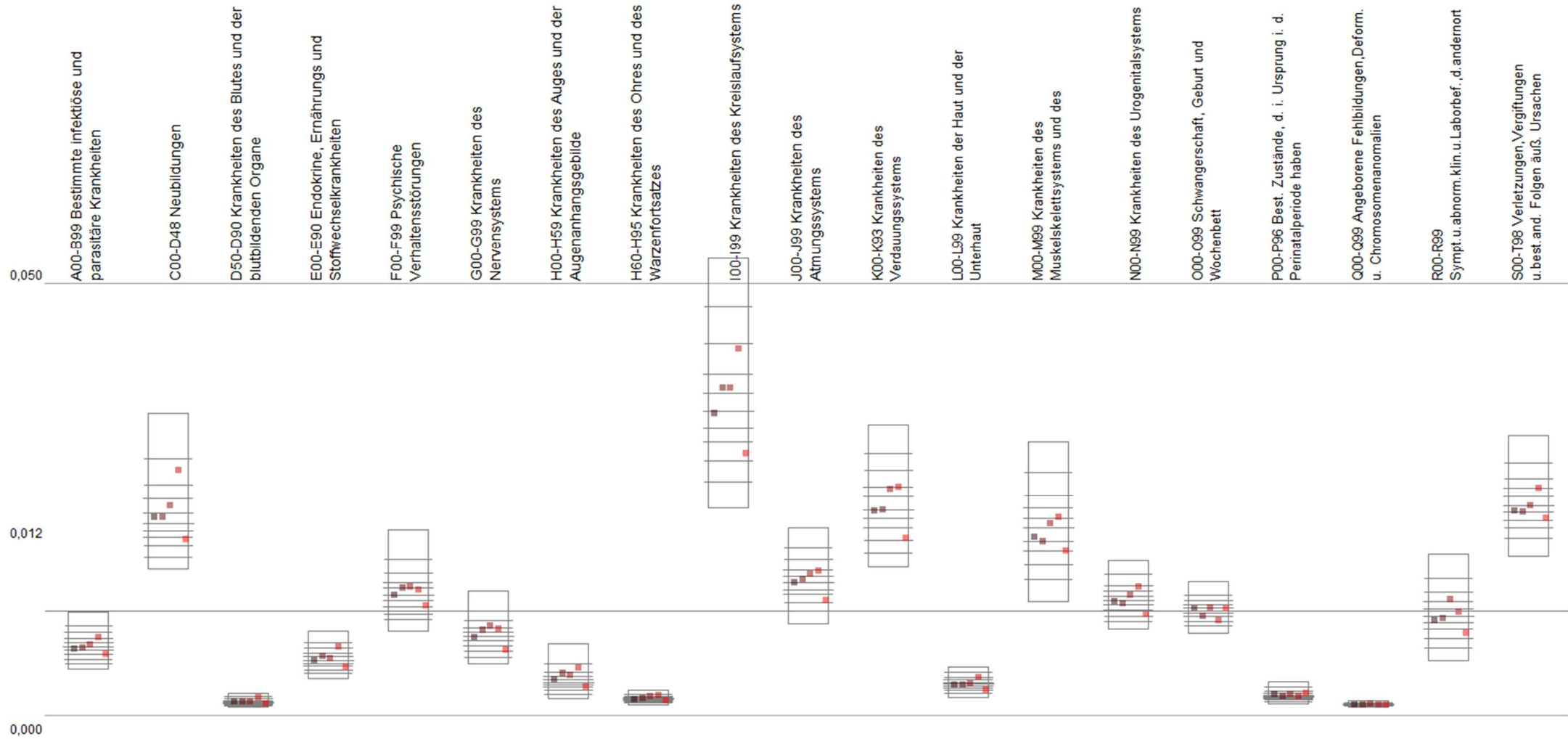
# Vollstationäre Hospitalisierungen nach Hauptdiagnose 2018

[www.rankingweb.de](http://www.rankingweb.de) Datengrundlage: [www.regionalstatistik.de](http://www.regionalstatistik.de) by-2-0 - GovData



# Vollstationäre Hospitalisierungen nach Hauptdiagnose 2019

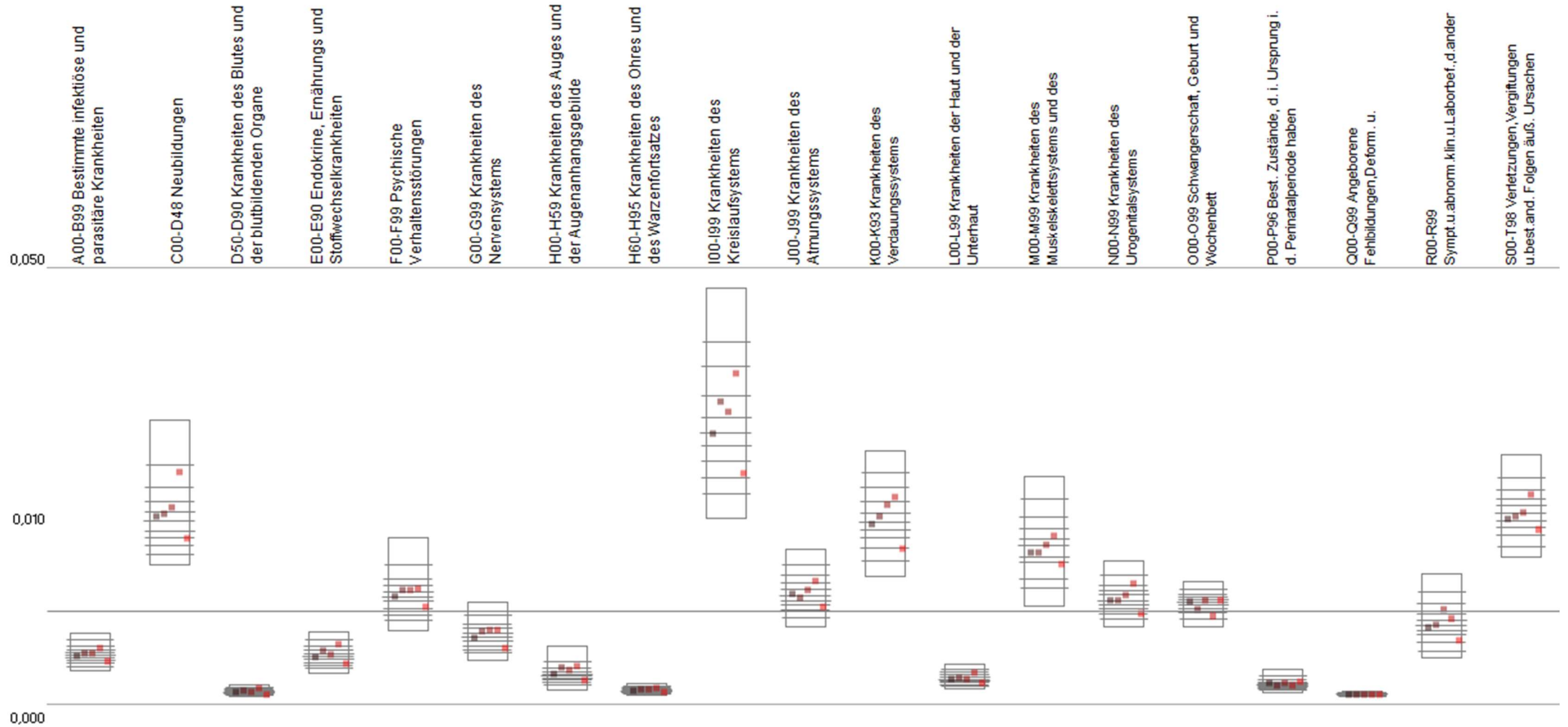
[www.rankingweb.de](http://www.rankingweb.de) Datengrundlage: [www.regionalstatistik.de](http://www.regionalstatistik.de) by-2-0 - GovData





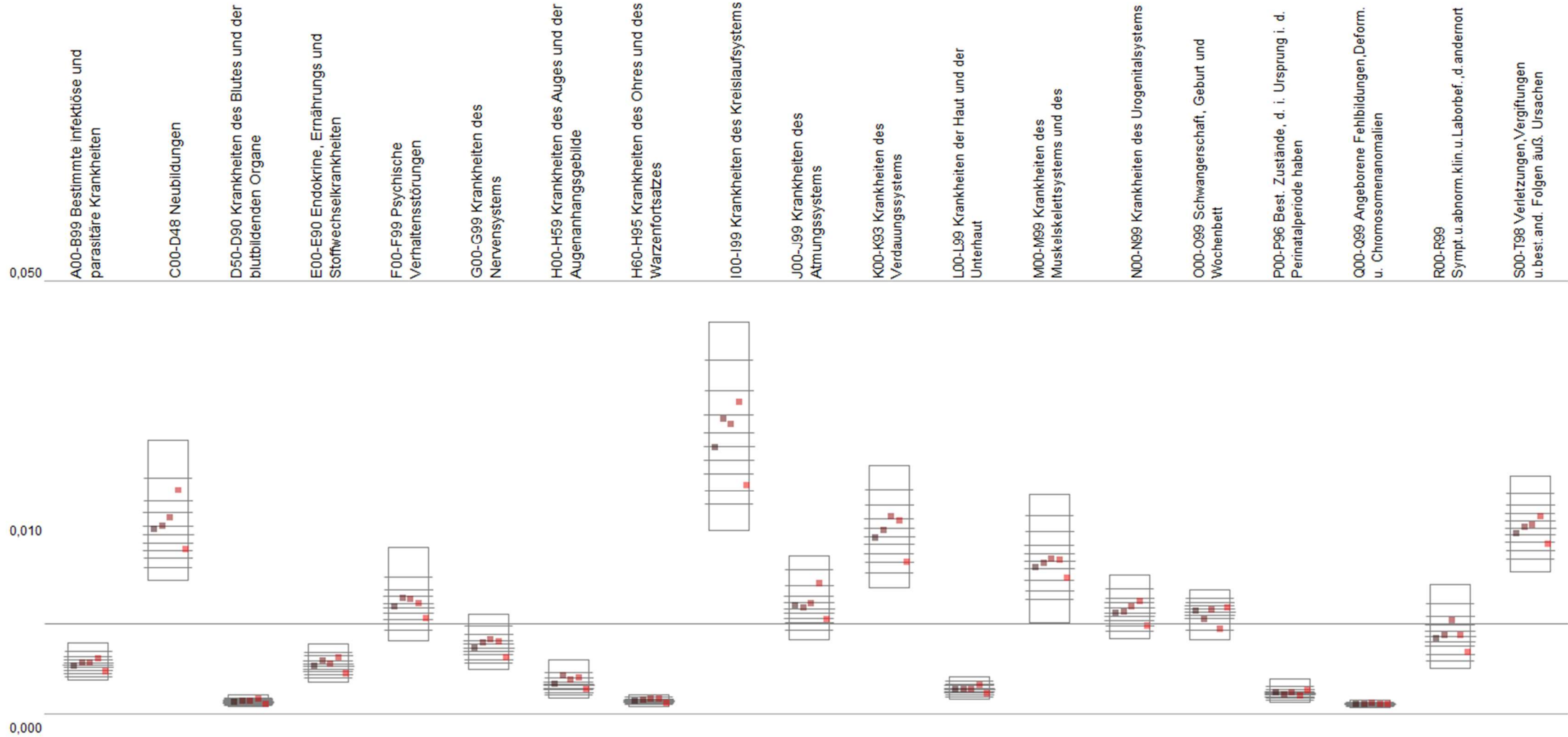
# Vollstationäre Hospitalisierungen nach Hauptdiagnose 2020

[www.rankingweb.de](http://www.rankingweb.de) Datengrundlage: [www.regionalstatistik.de](http://www.regionalstatistik.de) by-2-0 - GovData



# Vollstationäre Hospitalisierungen nach Hauptdiagnose 2021

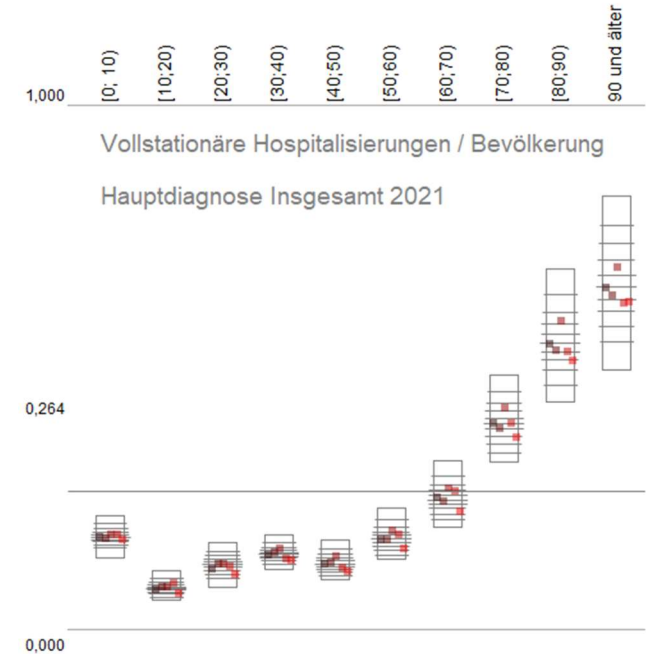
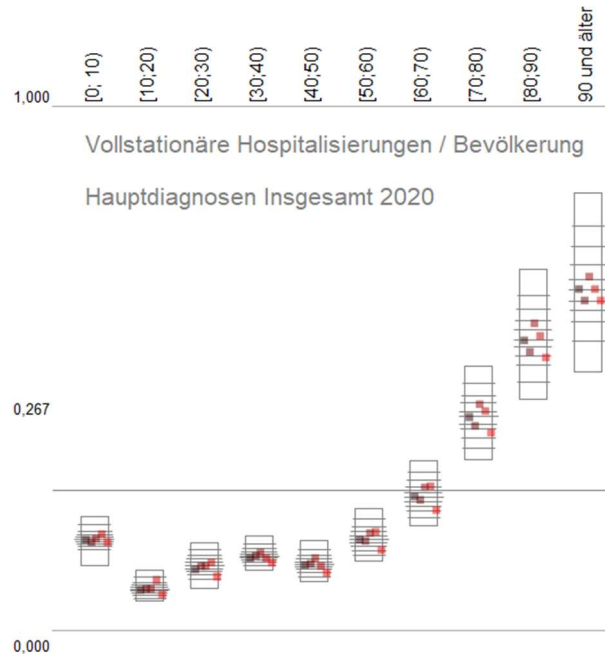
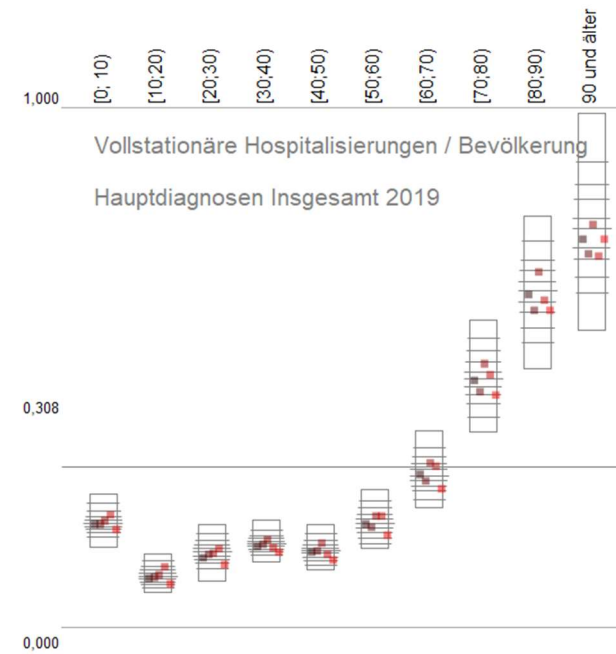
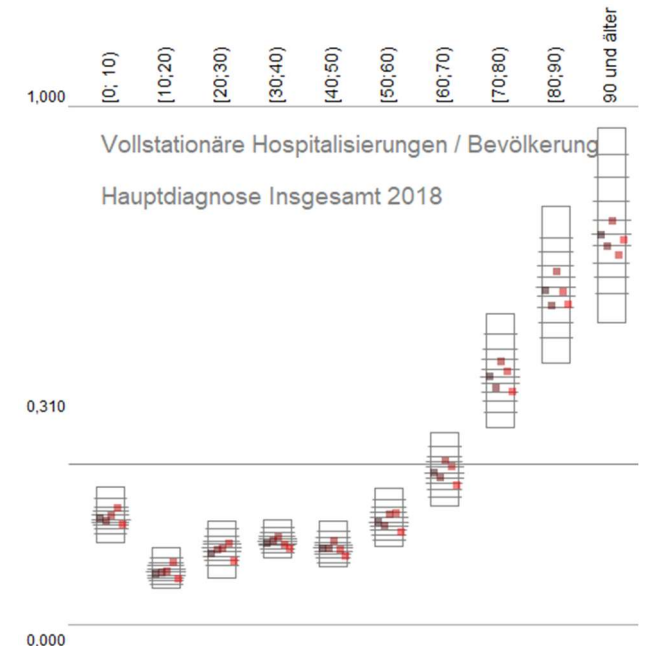
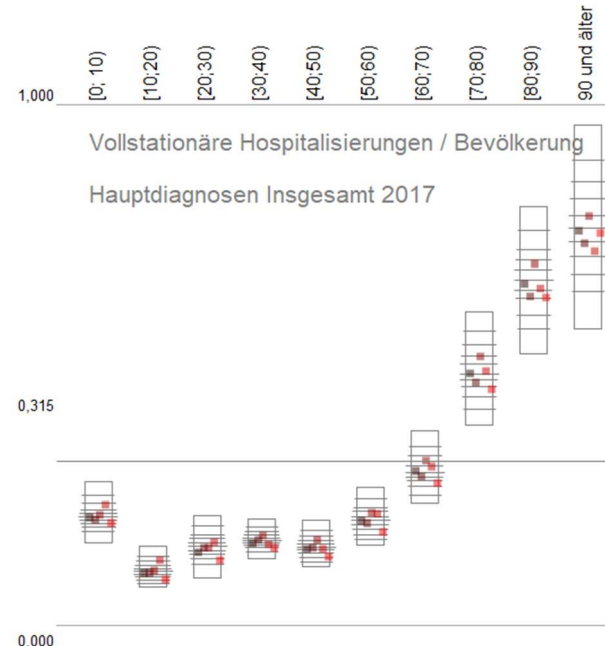
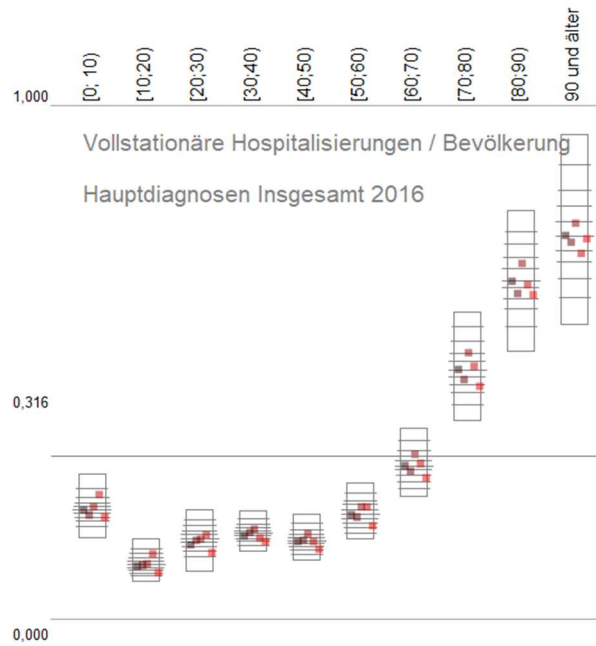
[www.rankingweb.de](http://www.rankingweb.de) Datengrundlage: [www.regionalstatistik.de](http://www.regionalstatistik.de) by-2-0 - GovData





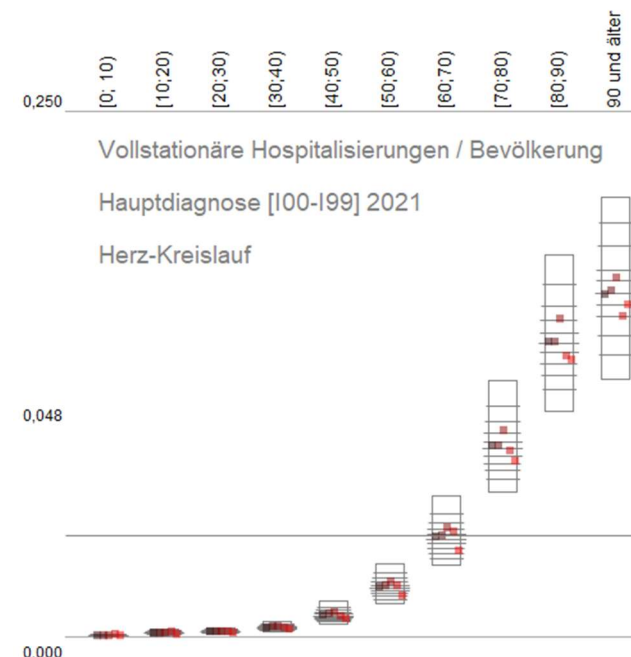
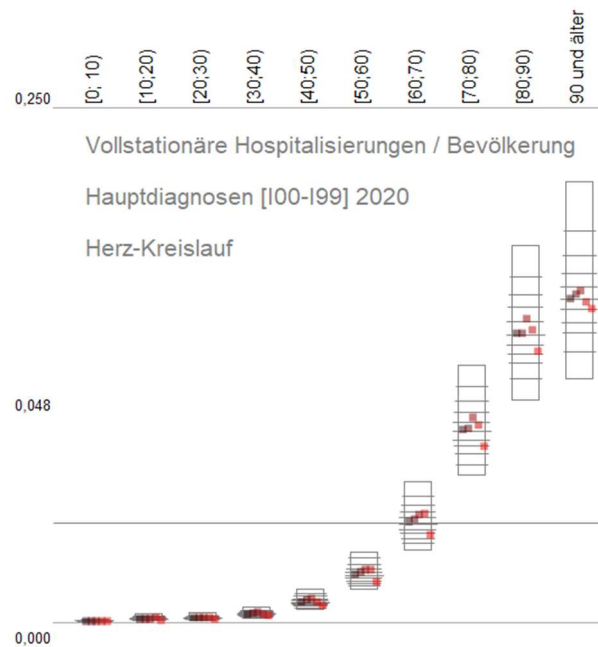
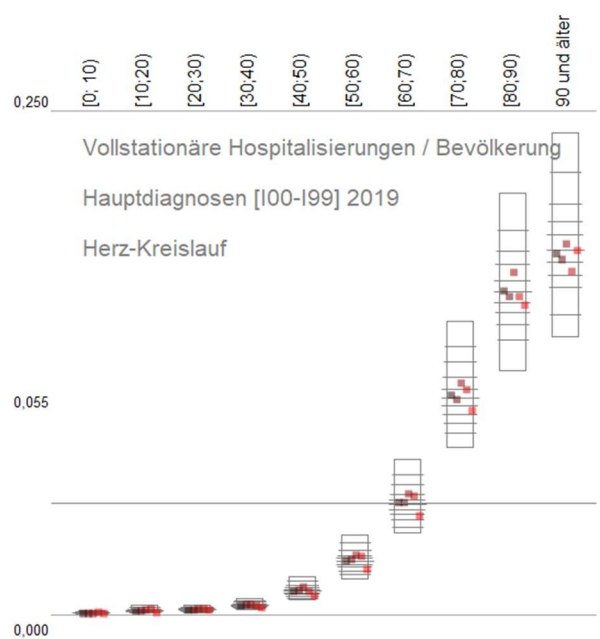
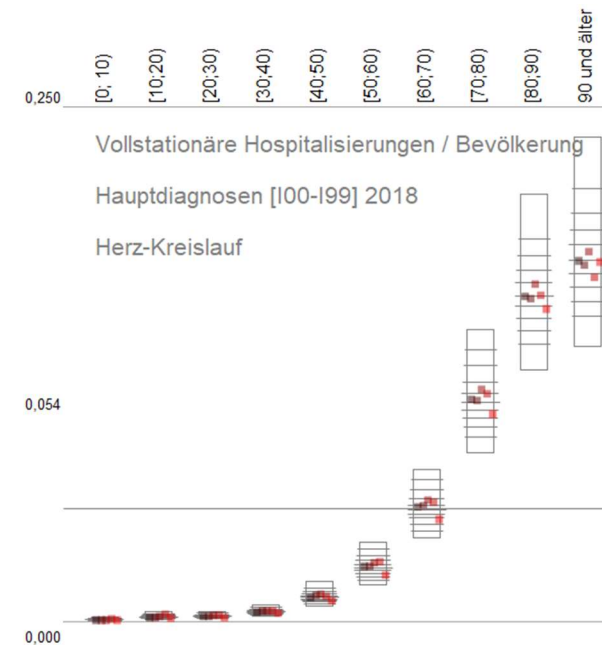
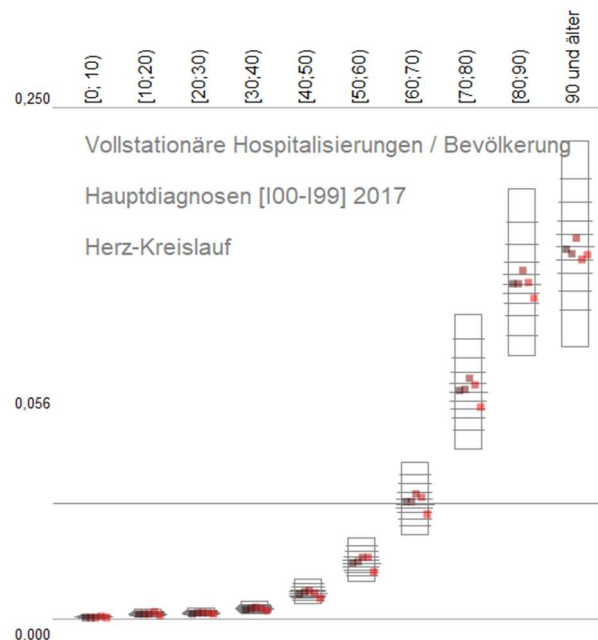
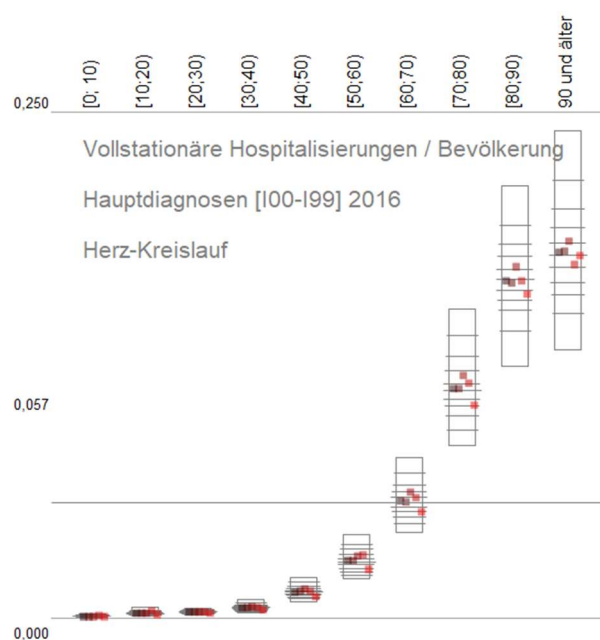
# Vollstationäre Hospitalisierungen nach Hauptdiagnose 2016 bis 2021 – Hauptdiagnosen Insgesamt

[www.rankingweb.de](http://www.rankingweb.de) Datengrundlage: [www.regionalstatistik.de](http://www.regionalstatistik.de) by-2-0 - GovData



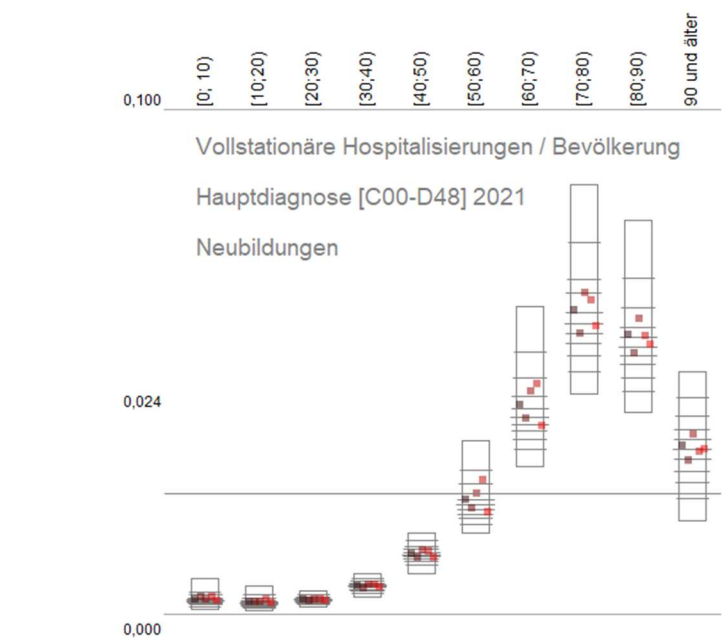
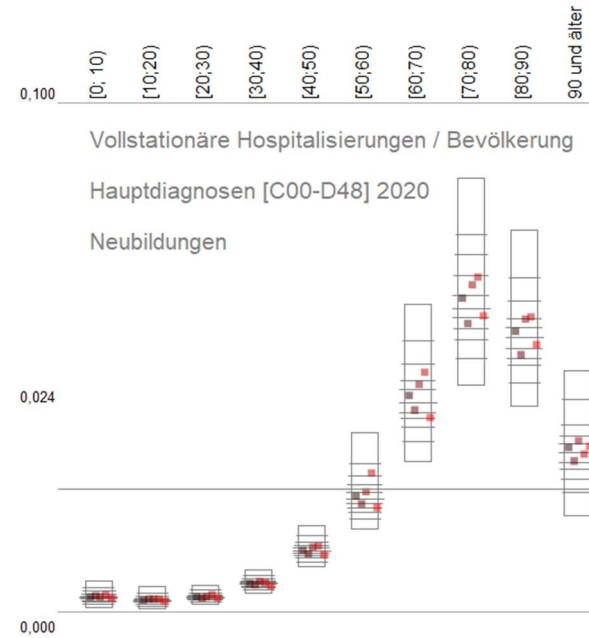
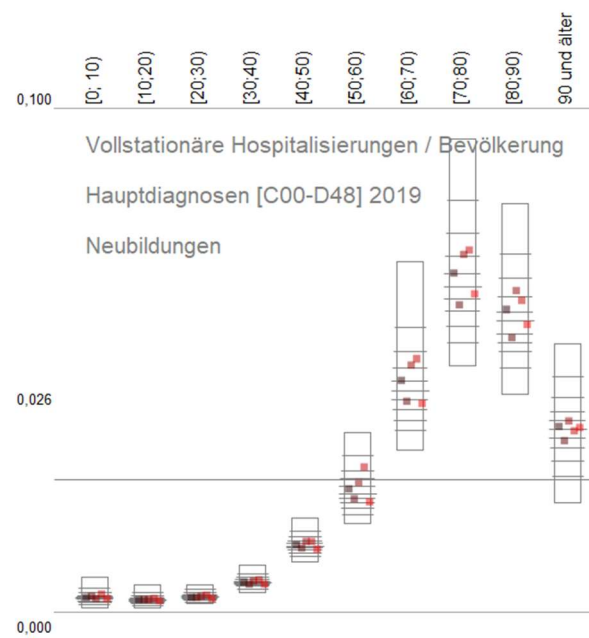
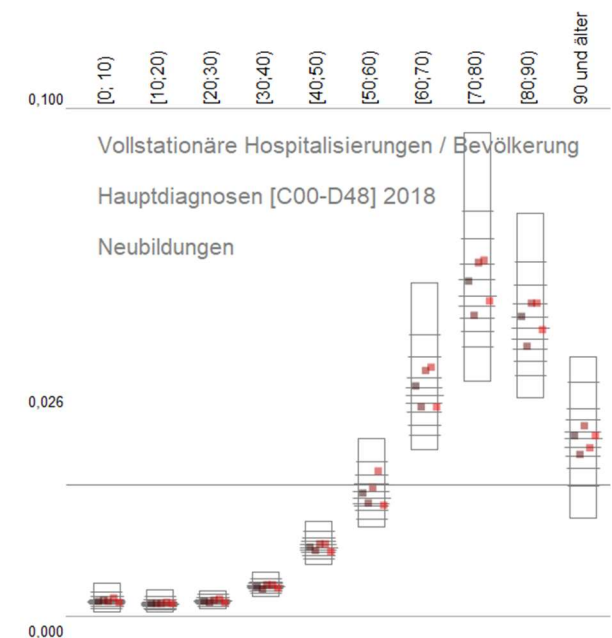
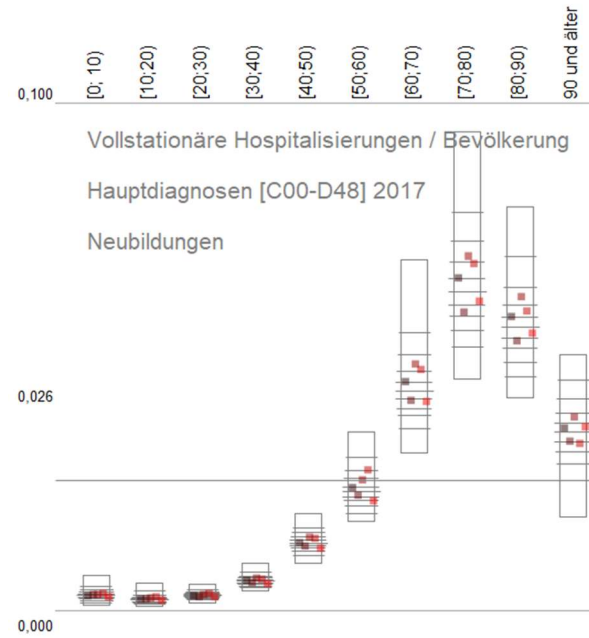
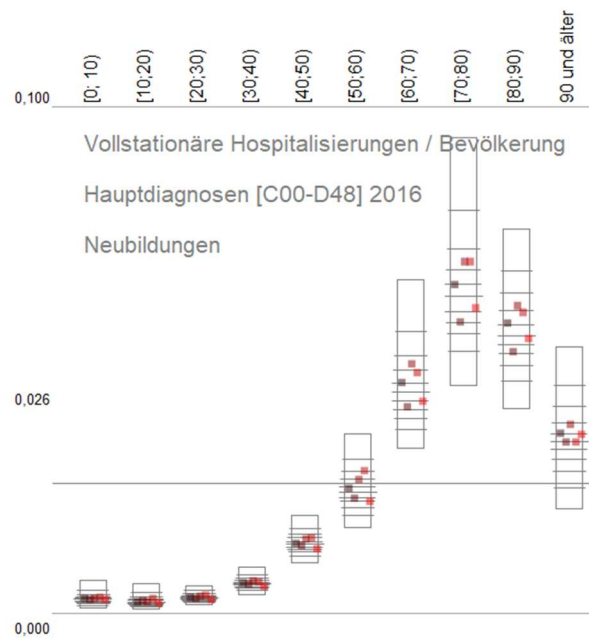
# Vollstationäre Hospitalisierungen nach Hauptdiagnose 2016 bis 2021 – Hauptdiagnose [I00-I99], Kerz-Kreislauf

[www.rankingweb.de](http://www.rankingweb.de) Datengrundlage: [www.regionalstatistik.de](http://www.regionalstatistik.de) by-2-0 - GovData



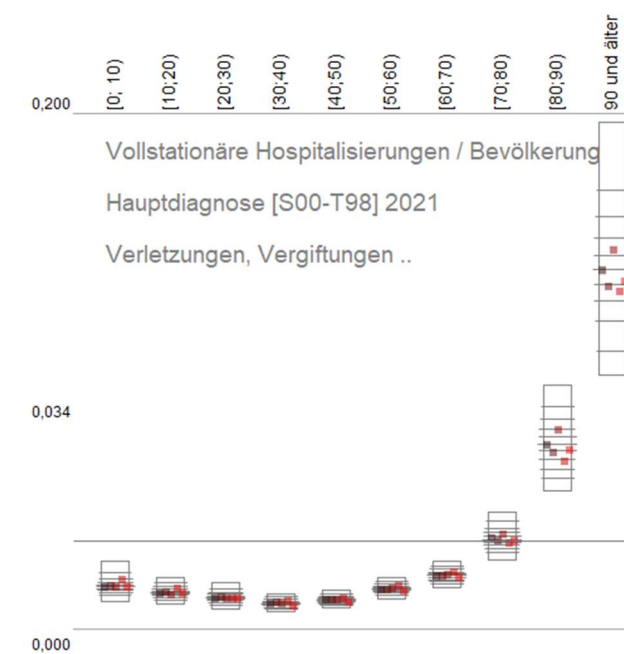
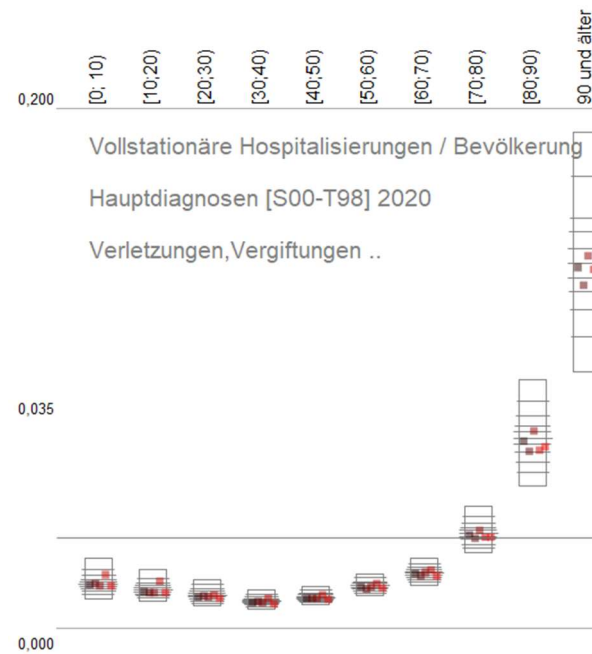
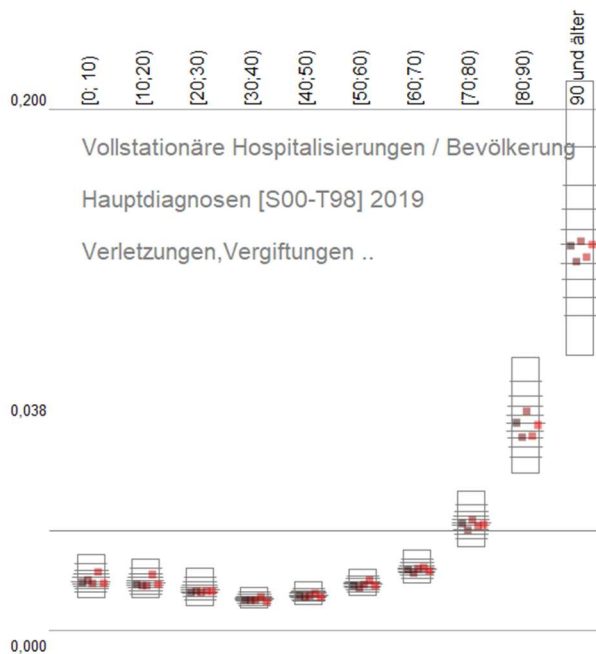
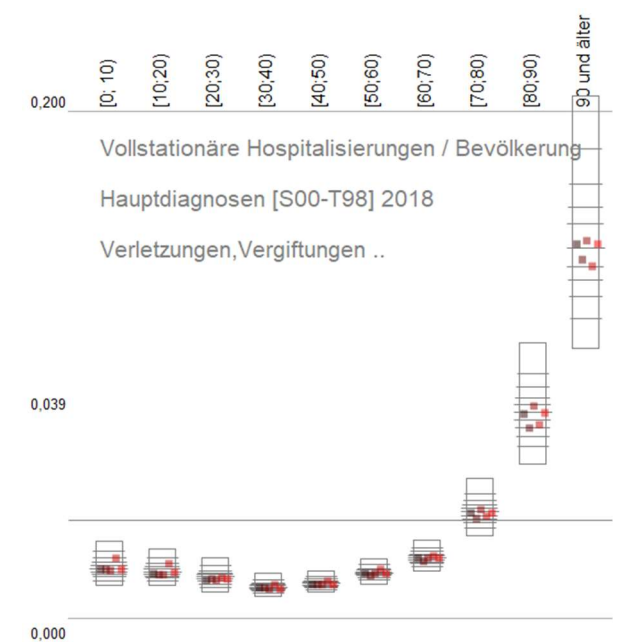
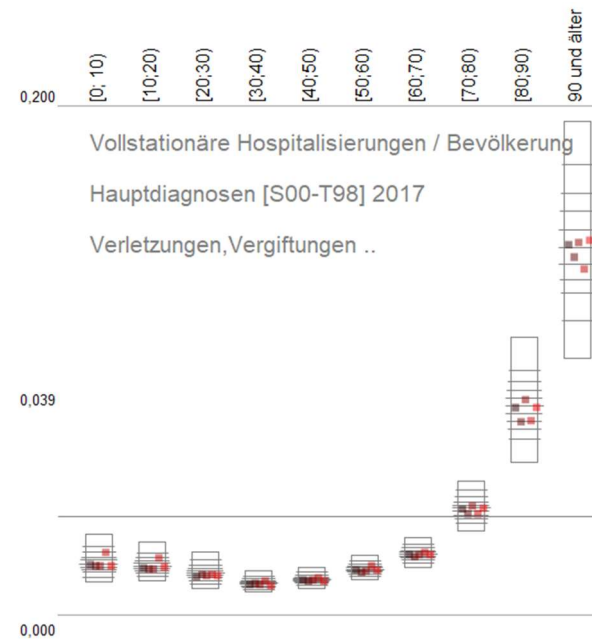
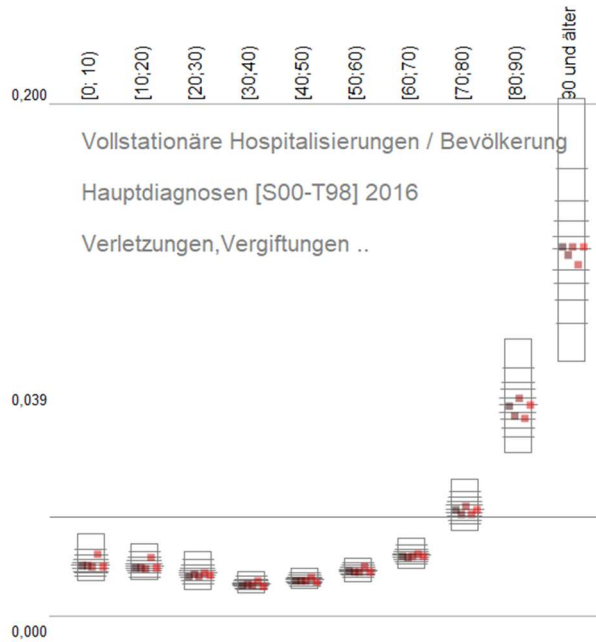
# Vollstationäre Hospitalisierungen nach Hauptdiagnose 2016 bis 2021 – Hauptdiagnose [C00-D48], Neubildungen

[www.rankingweb.de](http://www.rankingweb.de) Datengrundlage: [www.regionalstatistik.de](http://www.regionalstatistik.de) by-2-0 - GovData



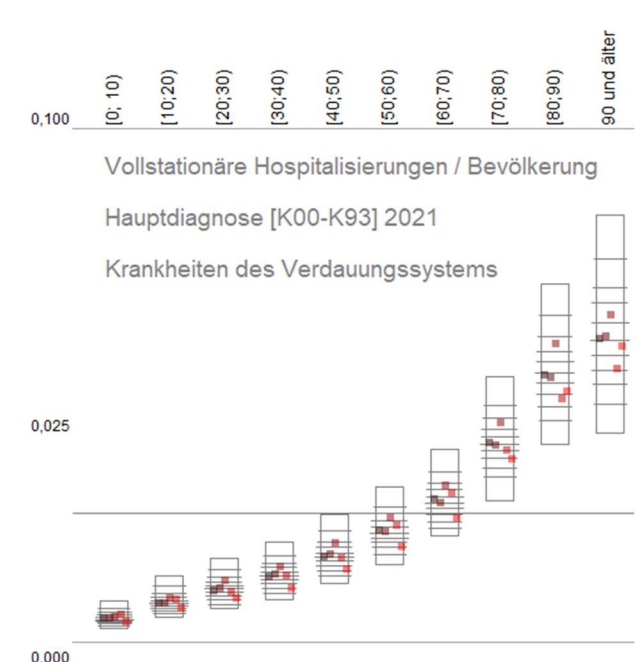
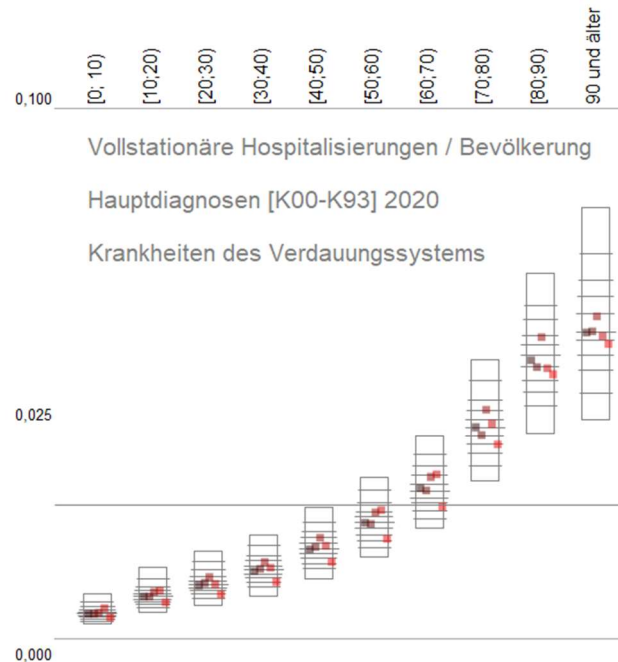
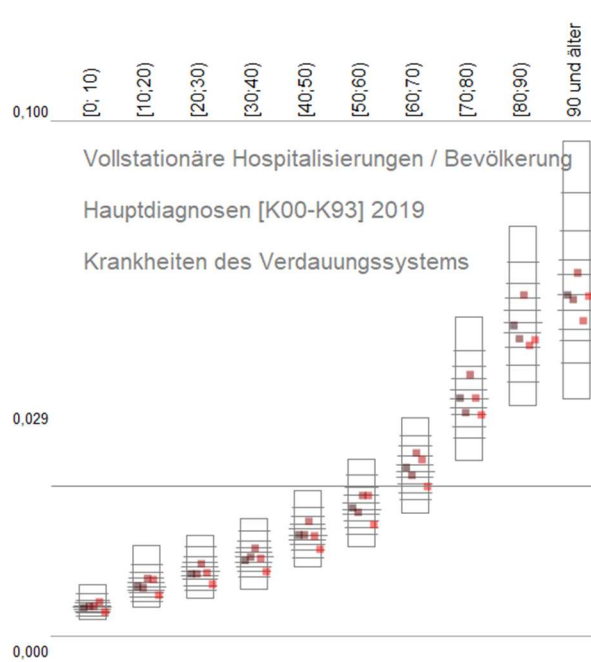
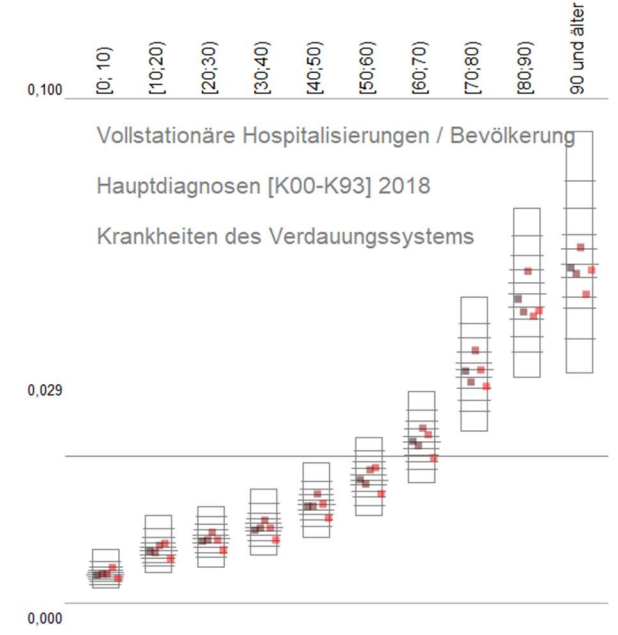
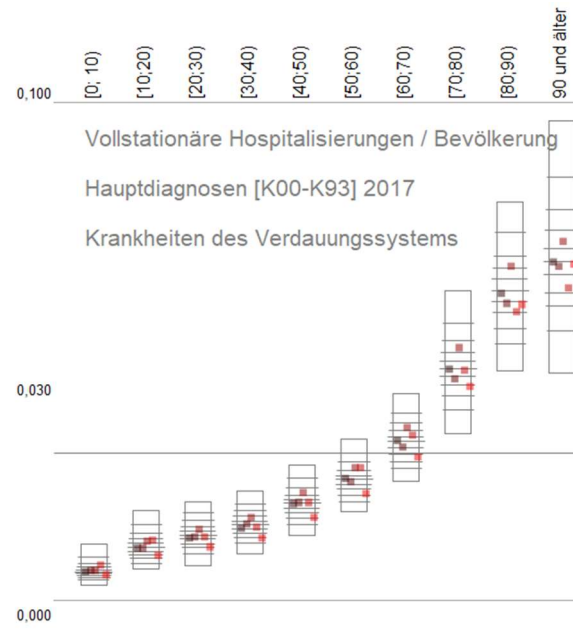
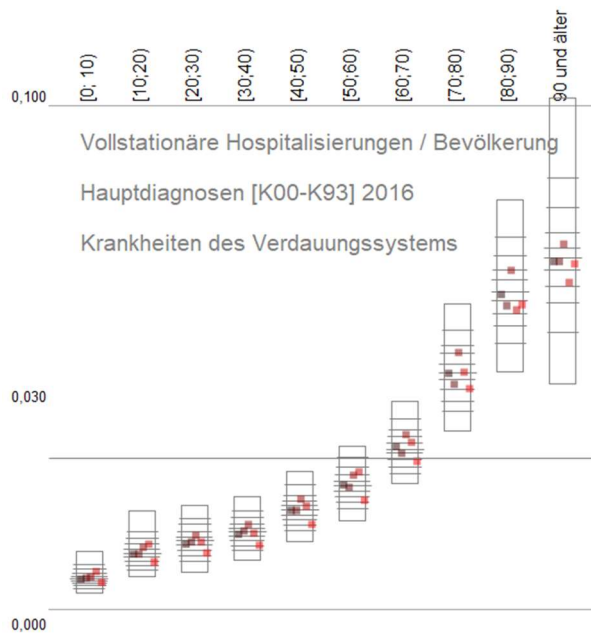
# Vollstationäre Hospitalisierungen nach Hauptdiagnose 2016 bis 2021 – Hauptdiagnose [S00-T98], Verletzungen, Vergiftungen ..

[www rankingweb.de](http://www rankingweb.de) Datengrundlage: [www regionalstatistik.de](http://www regionalstatistik.de) by-2-0 - GovData



# Vollstationäre Hospitalisierungen nach Hauptdiagnose 2016 bis 2021 – Hauptdiagnose [K00-K93], Verdauungssystem

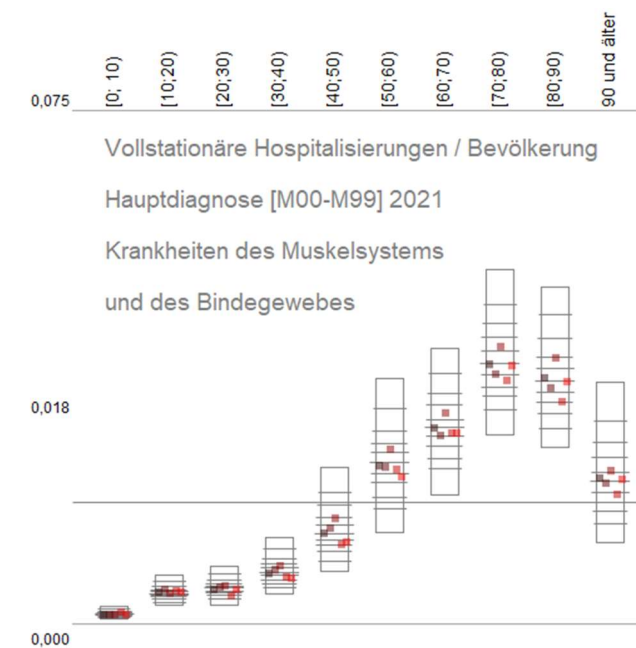
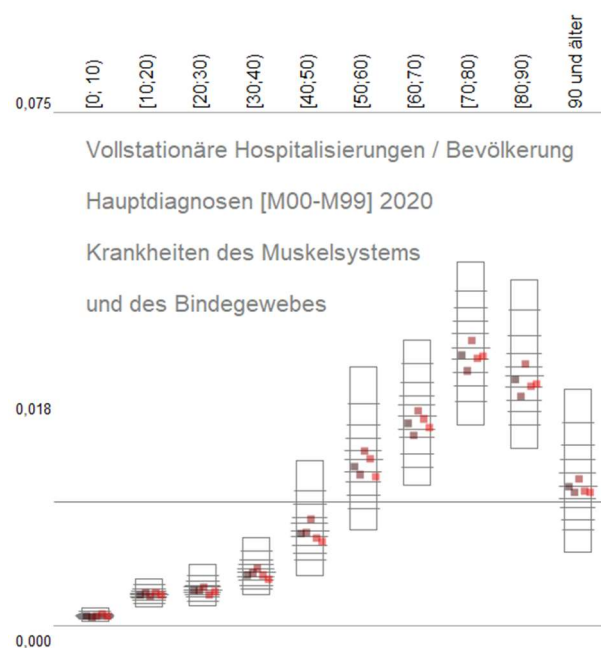
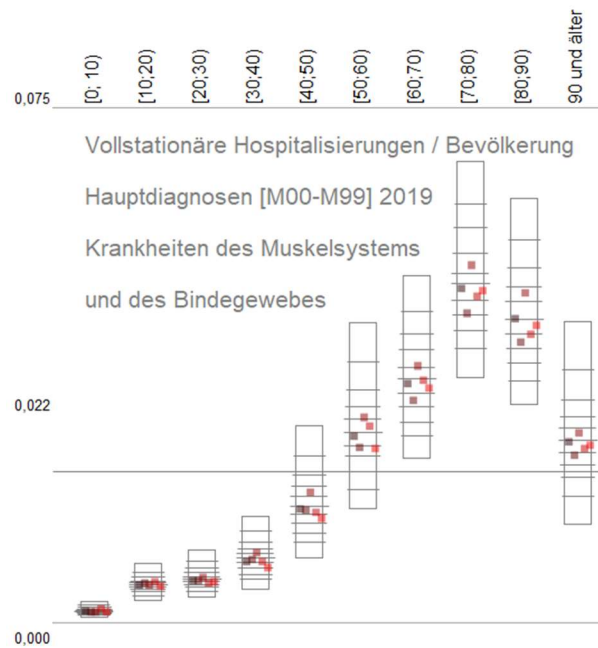
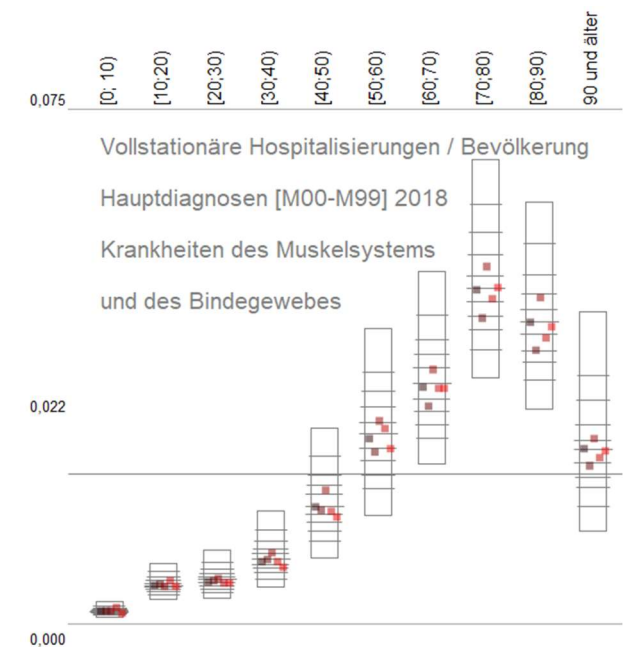
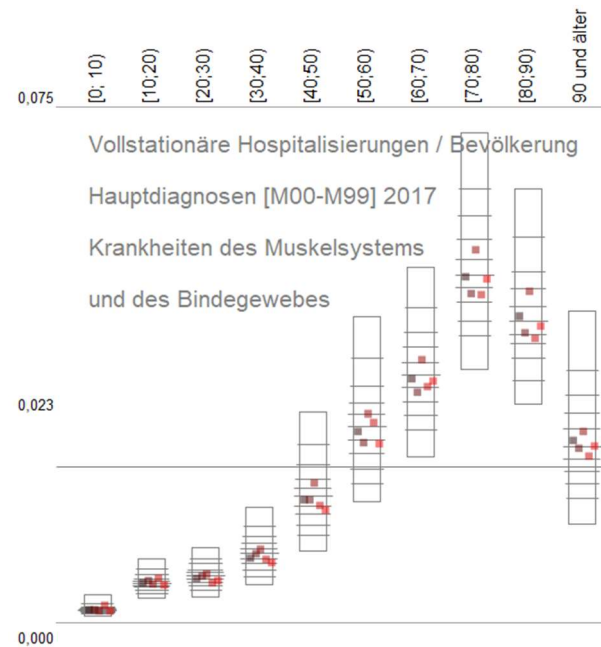
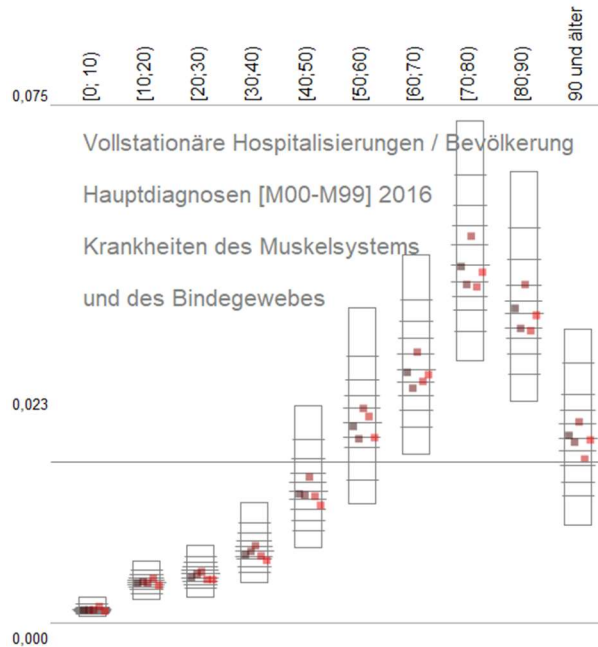
[www.rankingweb.de](http://www.rankingweb.de) Datengrundlage: [www.regionalstatistik.de](http://www.regionalstatistik.de) by-2-0 - GovData





# Vollstationäre Hospitalisierungen nach Hauptdiagnose 2016 bis 2021 – Hauptdiagnose [M00-M99], Muskelssystem, Bindegewebe

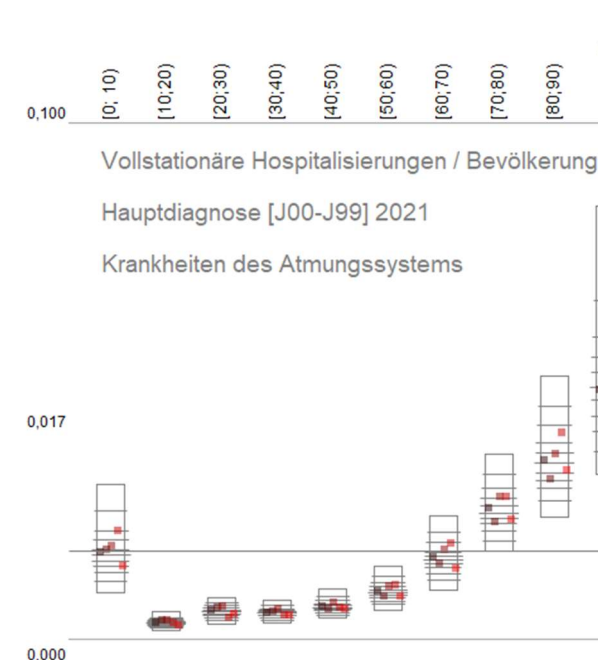
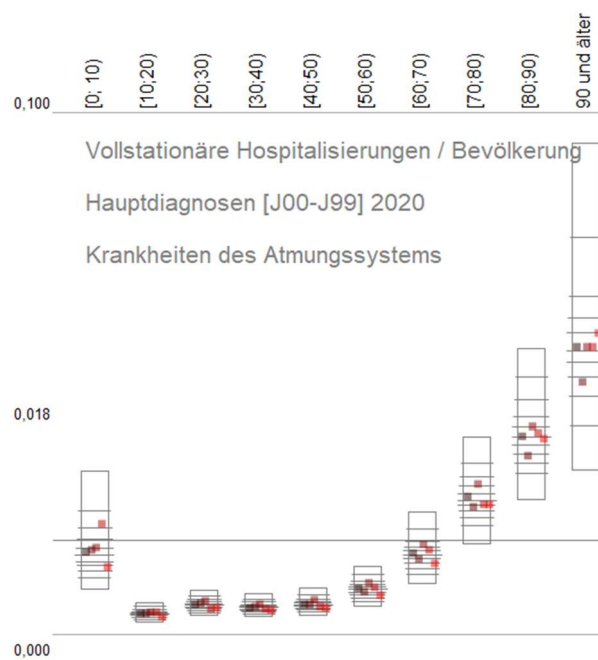
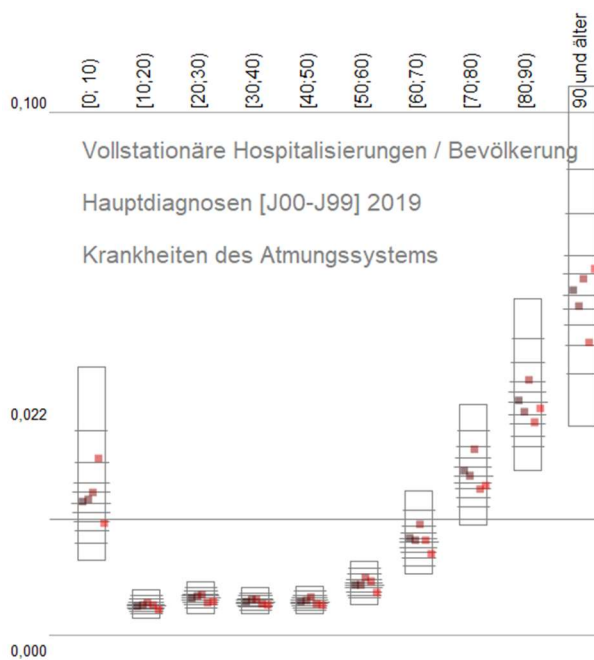
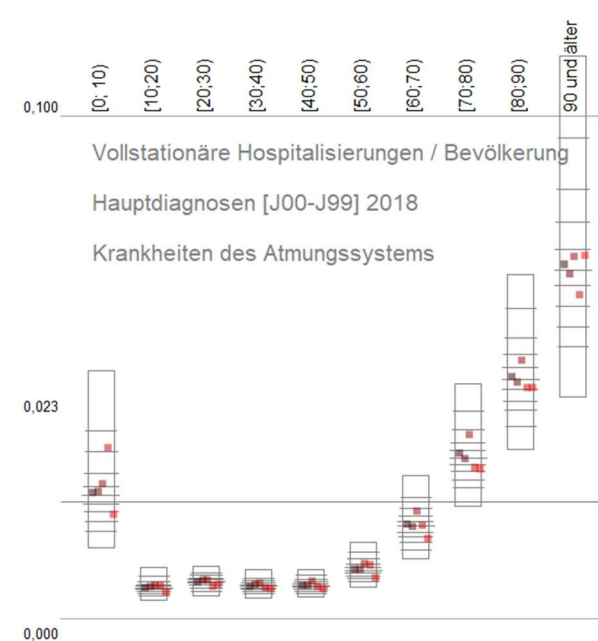
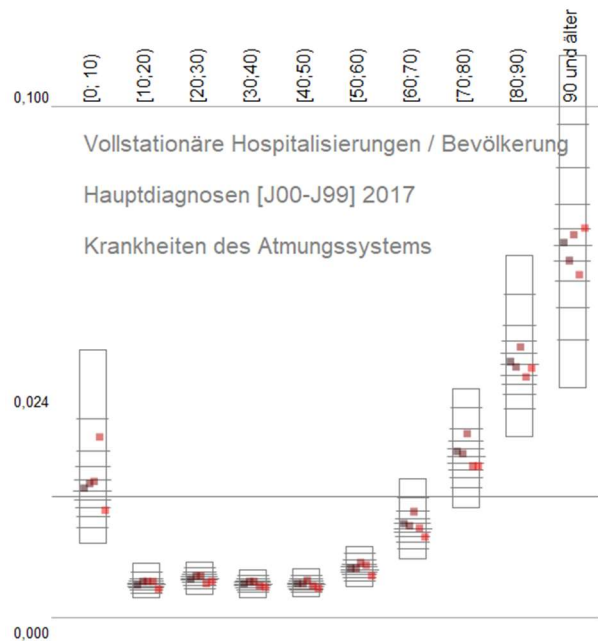
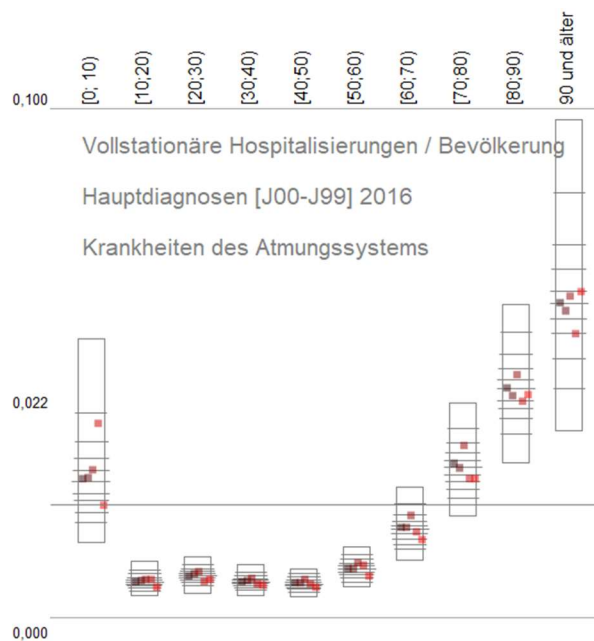
[www.rankingweb.de](http://www.rankingweb.de) Datengrundlage: [www.regionalstatistik.de](http://www.regionalstatistik.de) by-2-0 - GovData





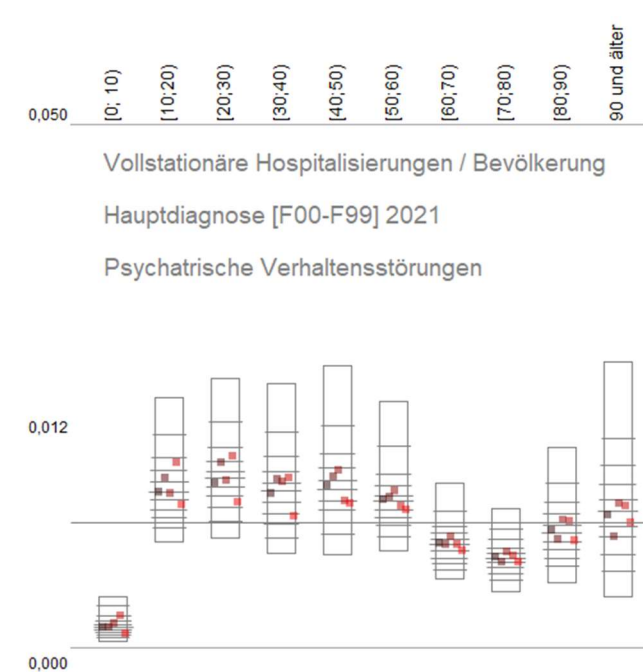
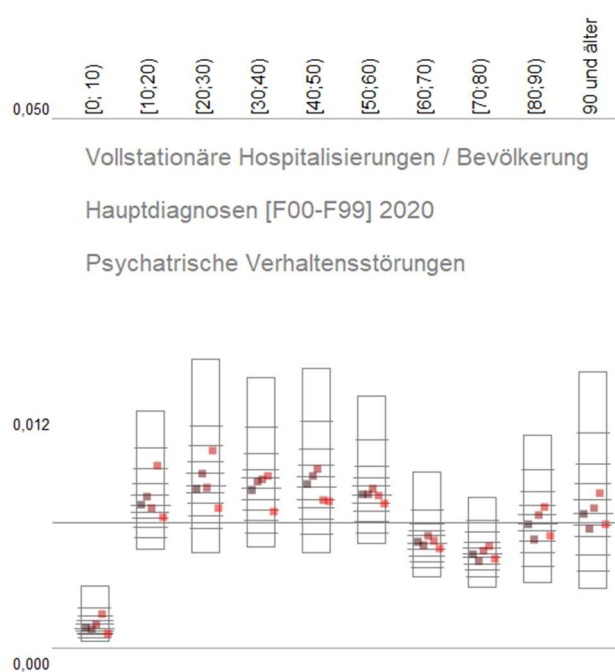
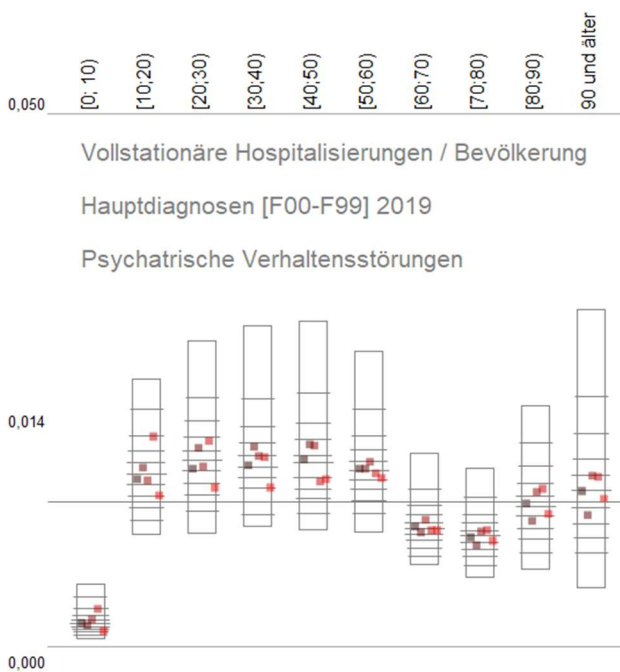
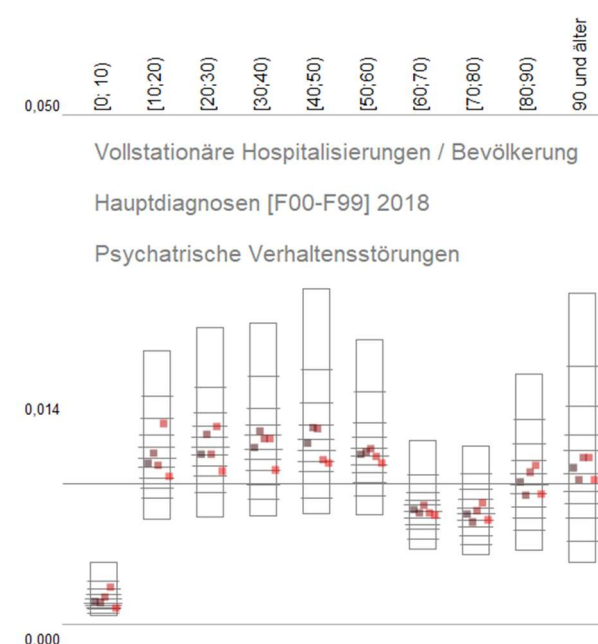
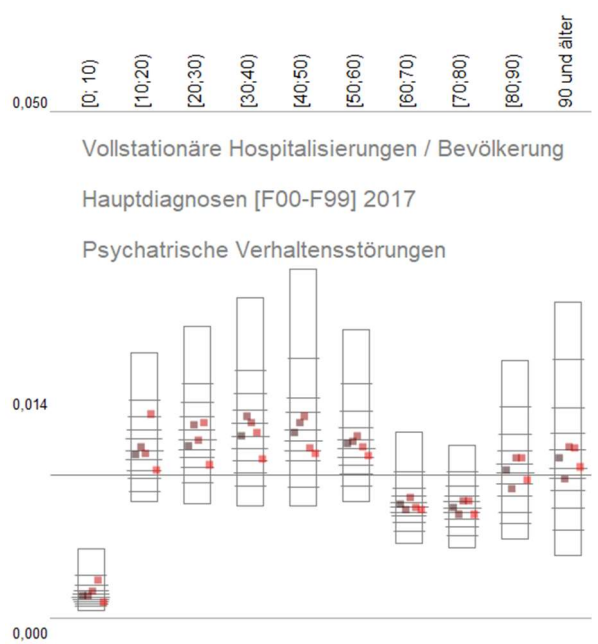
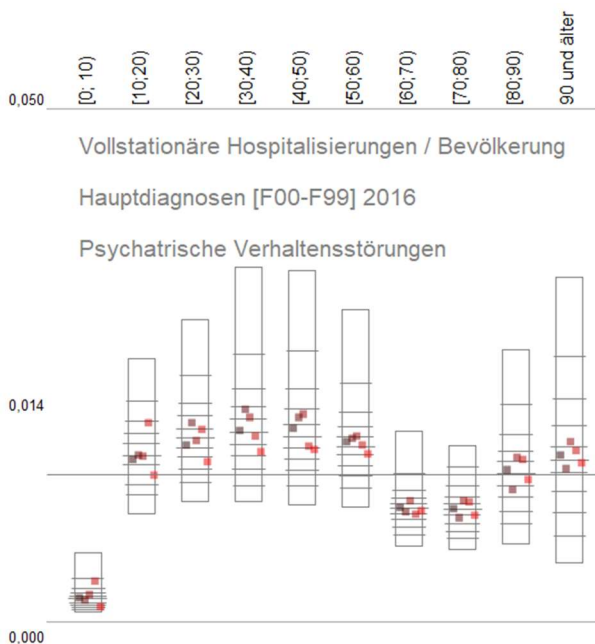
# Vollstationäre Hospitalisierungen nach Hauptdiagnose 2016 bis 2021 – Hauptdiagnose [J00-J99], Atmungssystem

[www.rankingweb.de](http://www.rankingweb.de) Datengrundlage: [www.regionalstatistik.de](http://www.regionalstatistik.de) by-2-0 - GovData



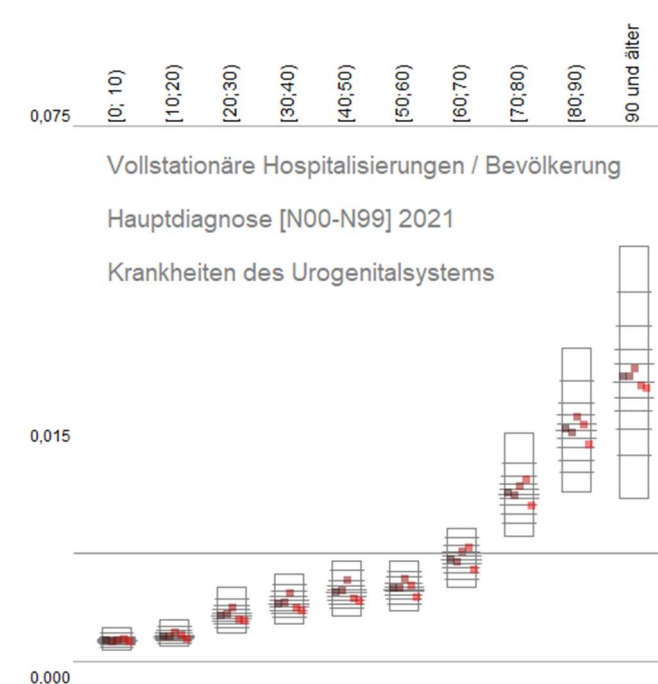
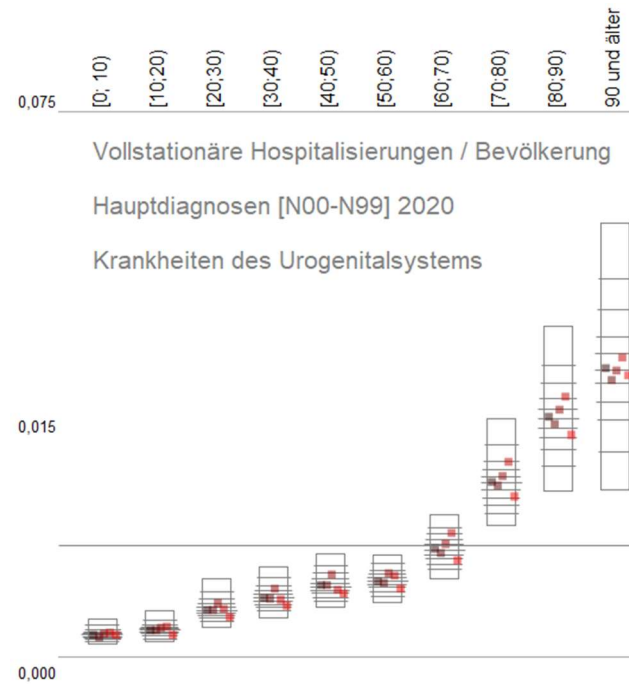
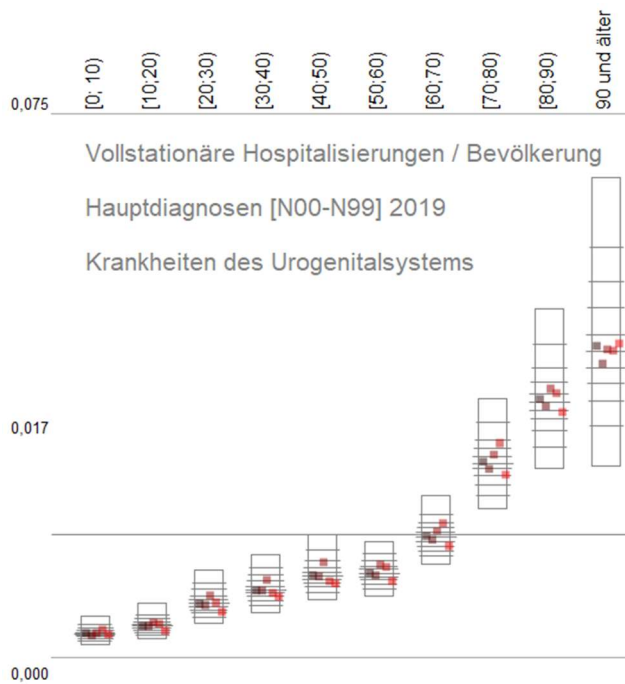
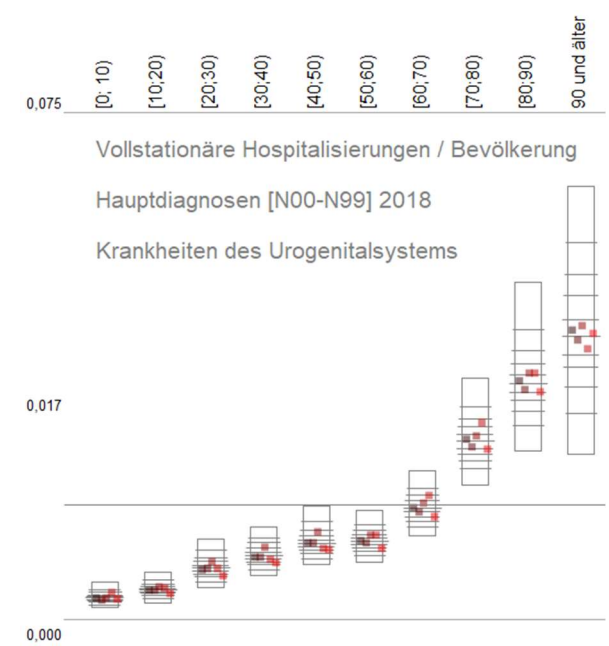
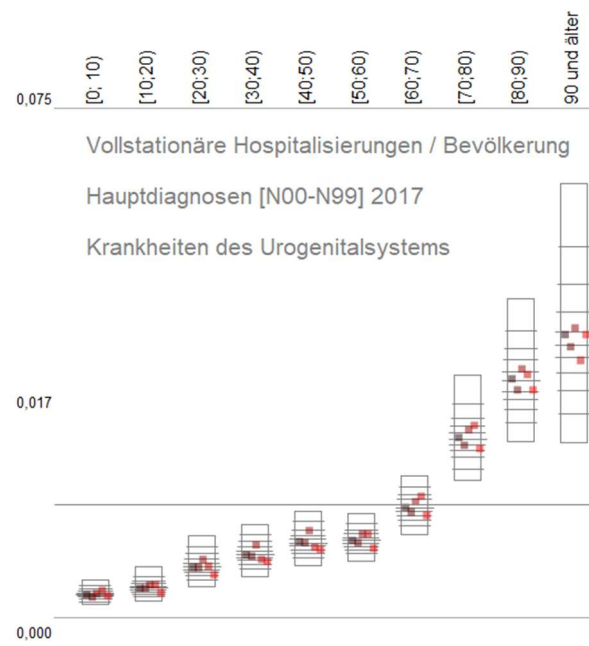
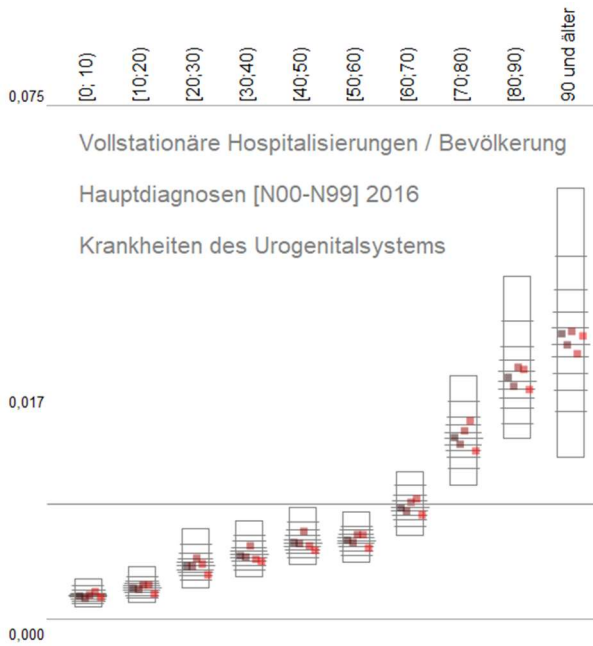
# Vollstationäre Hospitalisierungen nach Hauptdiagnose 2016 bis 2021 – Hauptdiagnose [F00-F99],

Psychiatrische Verhaltensstörungen [www.rankingweb.de](http://www.rankingweb.de) Datengrundlage: [www.regionalstatistik.de](http://www.regionalstatistik.de) [by-2-0 - GovData](#)

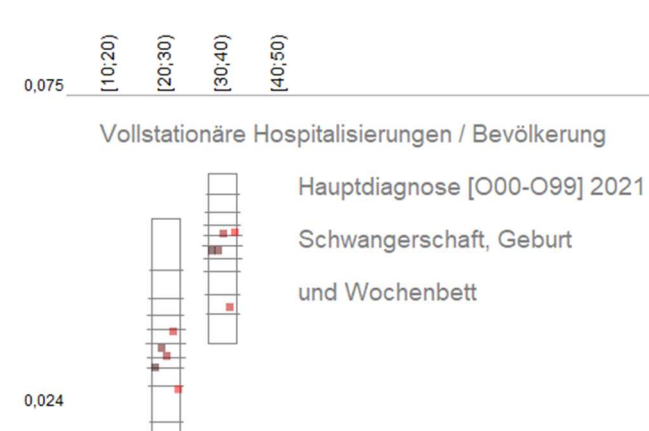
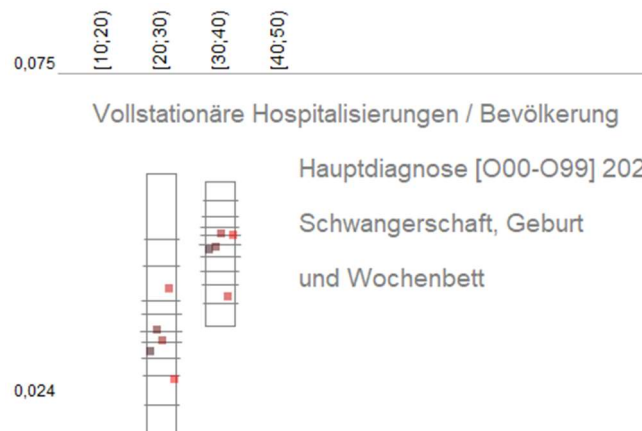
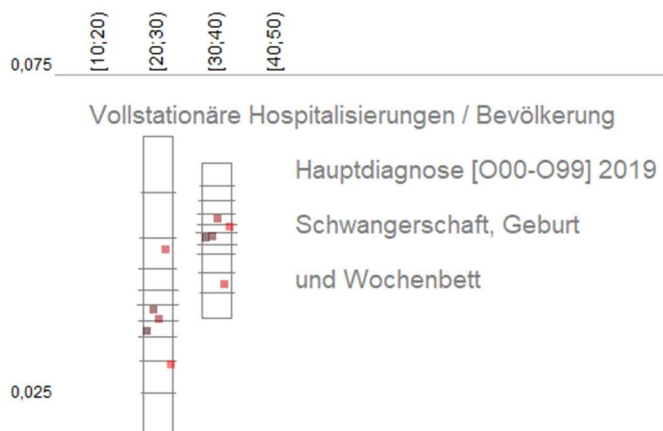
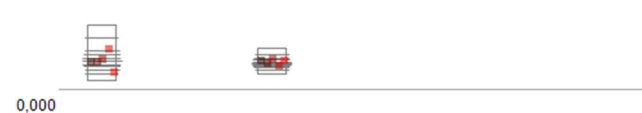
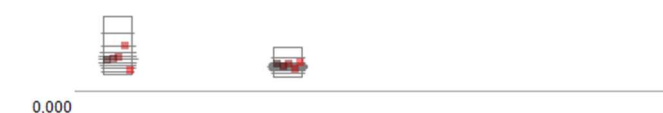
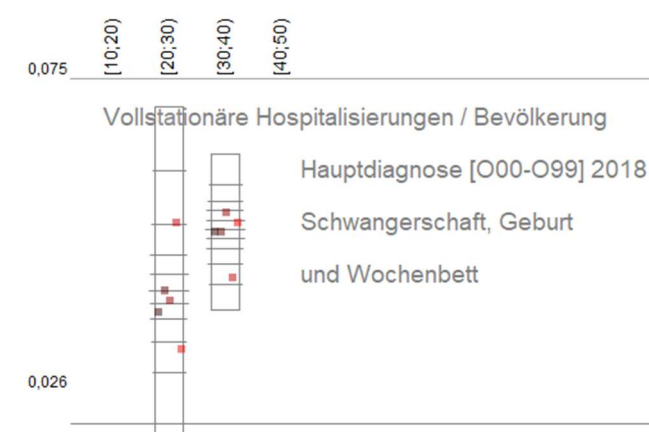
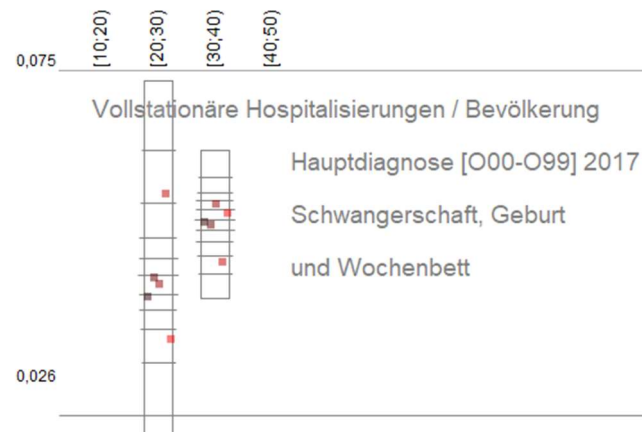
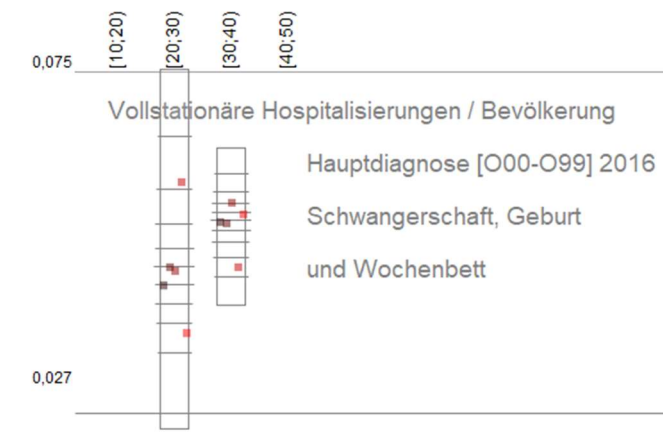


# Vollstationäre Hospitalisierungen nach Hauptdiagnose 2016 bis 2021 – Hauptdiagnose [N00-N99], Urogenitalsystem

[www.rankingweb.de](http://www.rankingweb.de) Datengrundlage: [www.regionalstatistik.de](http://www.regionalstatistik.de) by-2-0 - GovData



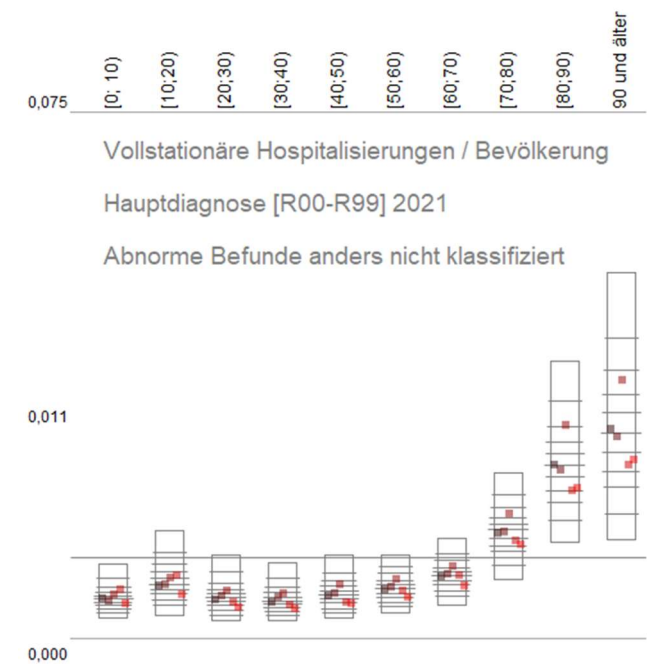
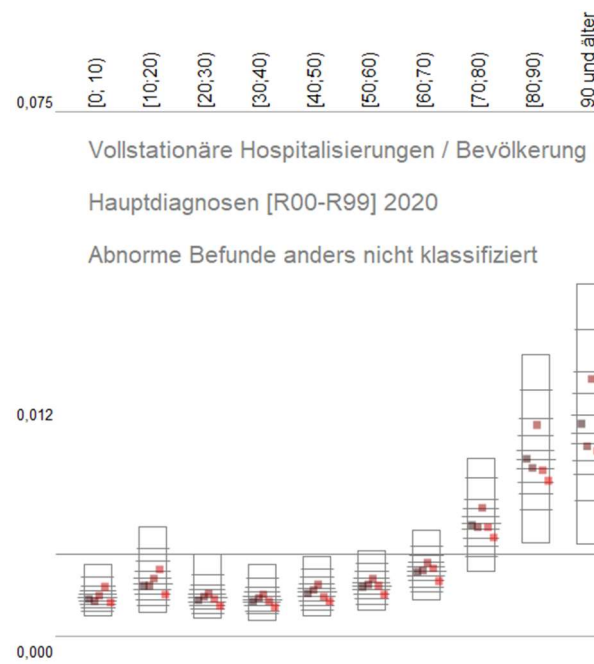
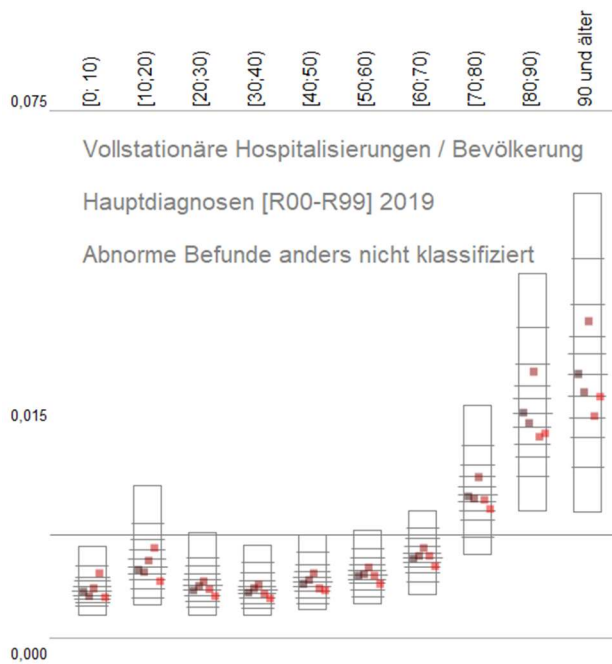
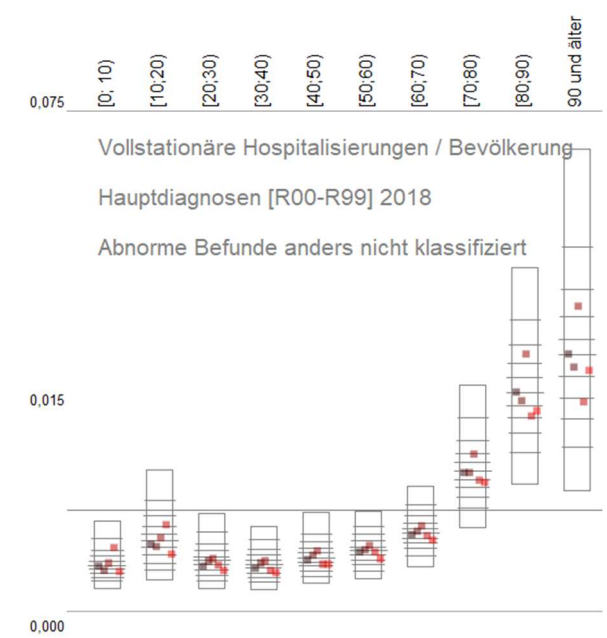
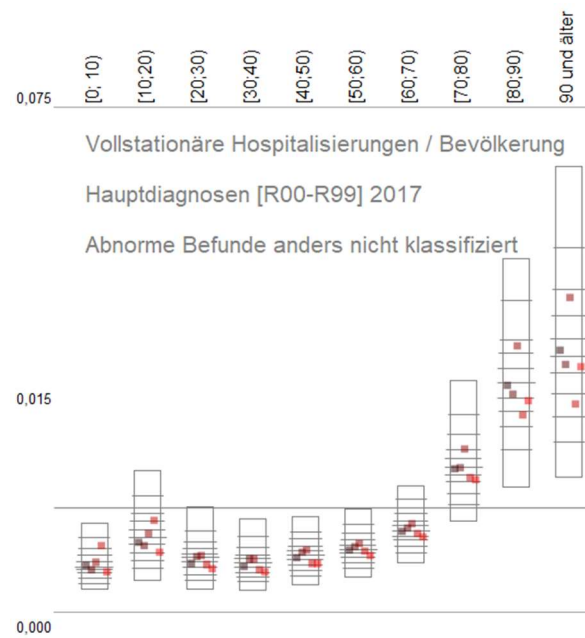
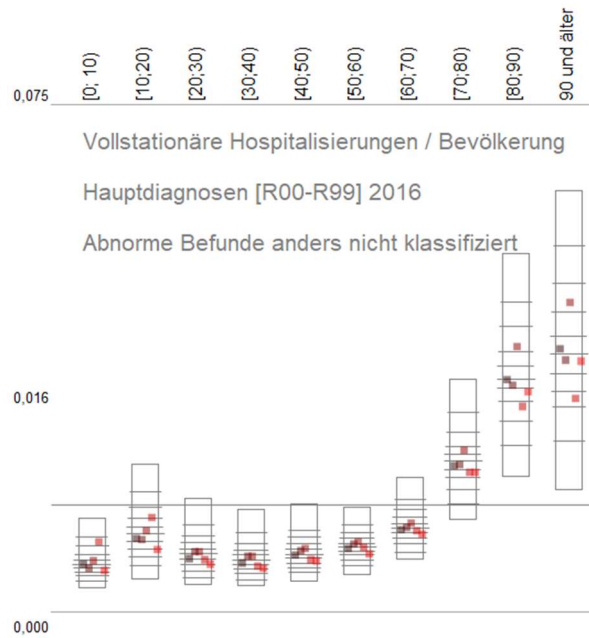
# Vollstationäre Hospitalisierungen nach Hauptdiagnose 2016 bis 2021 – Hauptdiagnose [O00-O99], Schwangerschaft, Geburt und Wochenbett [www.rankingweb.de](http://www.rankingweb.de) Datengrundlage: [www.regionalstatistik.de](http://www.regionalstatistik.de) by-2-0 - GovData





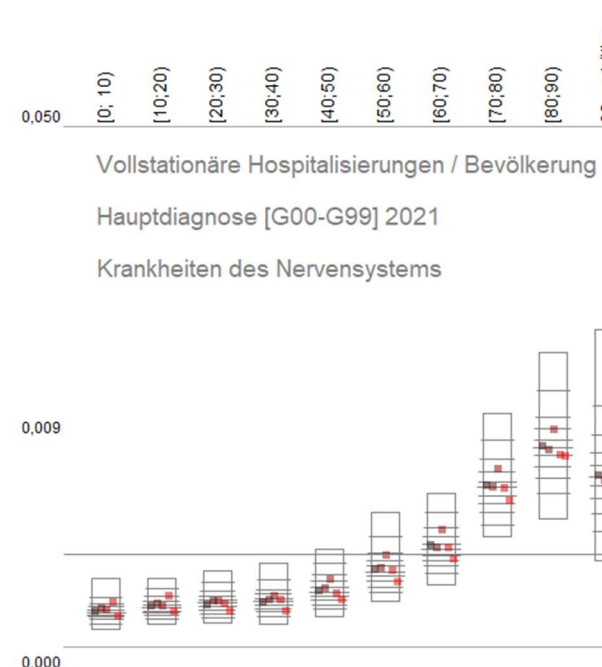
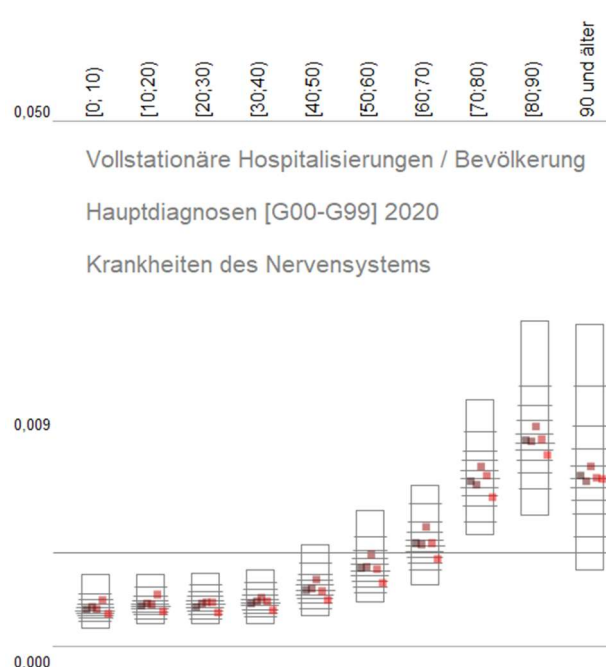
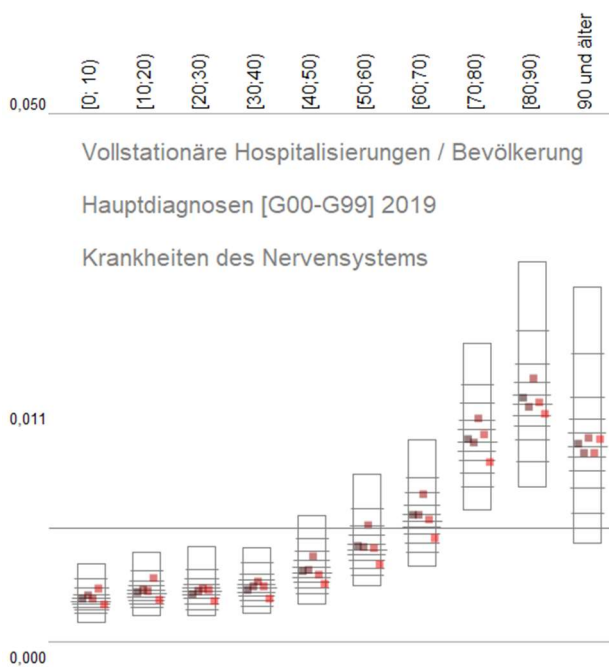
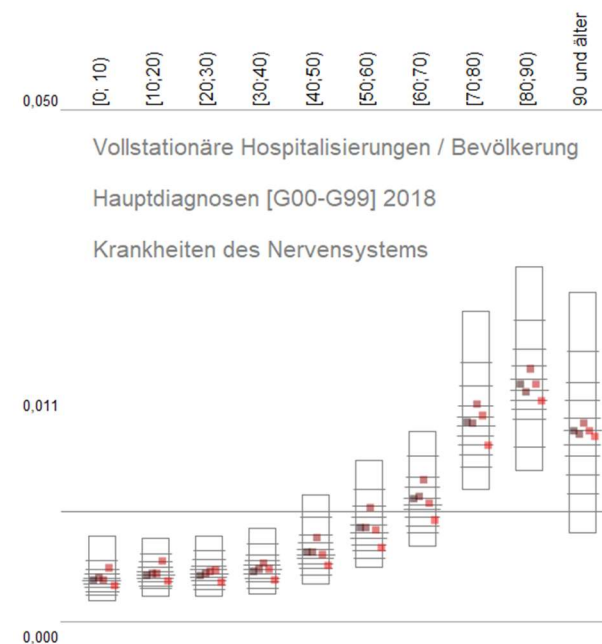
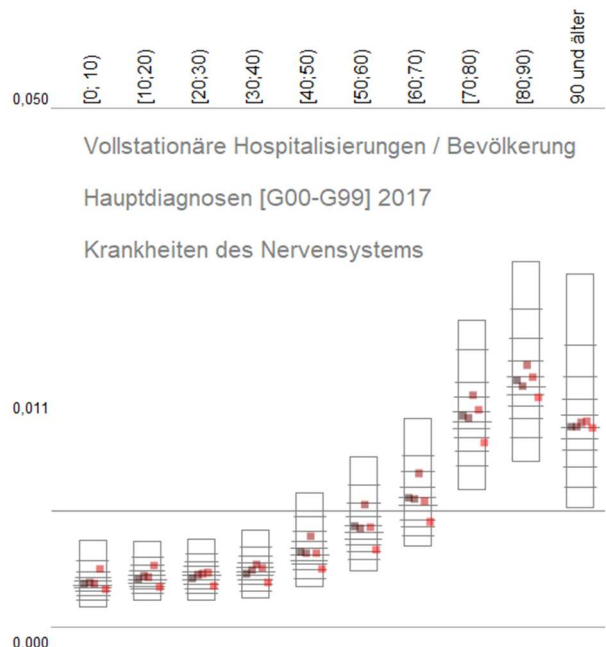
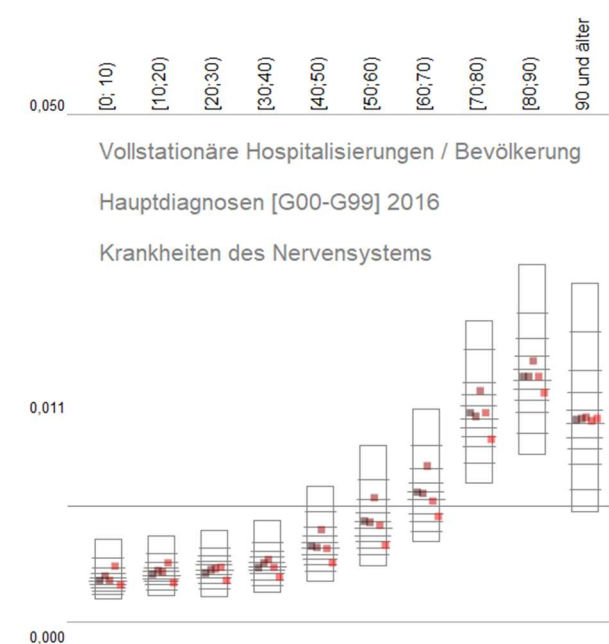
# Vollstationäre Hospitalisierungen nach Hauptdiagnose 2016 bis 2021 – Hauptdiagnose [R00-R99],

Abnorme Befunde anders nicht klassifiziert [www.rankingweb.de](http://www.rankingweb.de) Datengrundlage: [www.regionalstatistik.de](http://www.regionalstatistik.de) [by-2-0 - GovData](#)



# Vollstationäre Hospitalisierungen nach Hauptdiagnose 2016 bis 2021 – Hauptdiagnose [G00-G99], Nervensystem

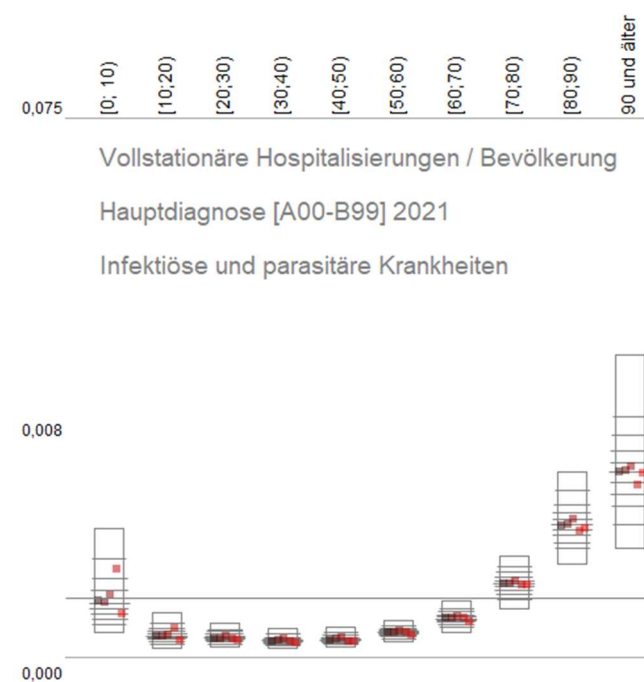
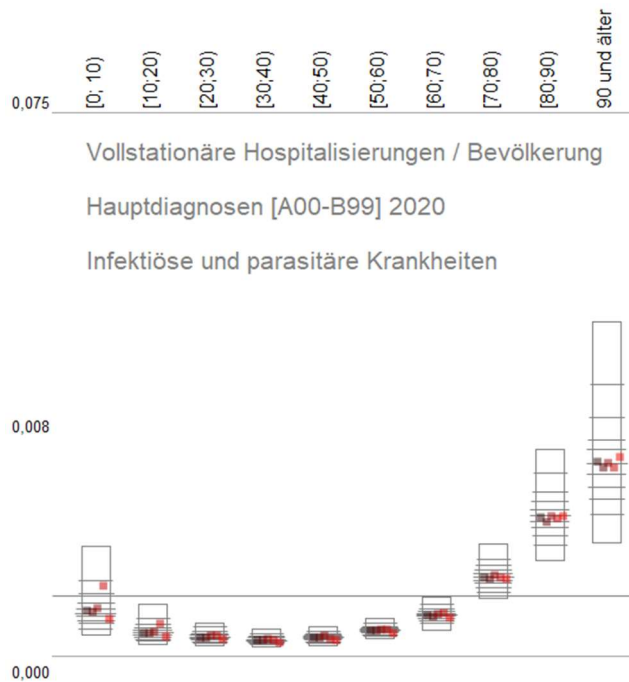
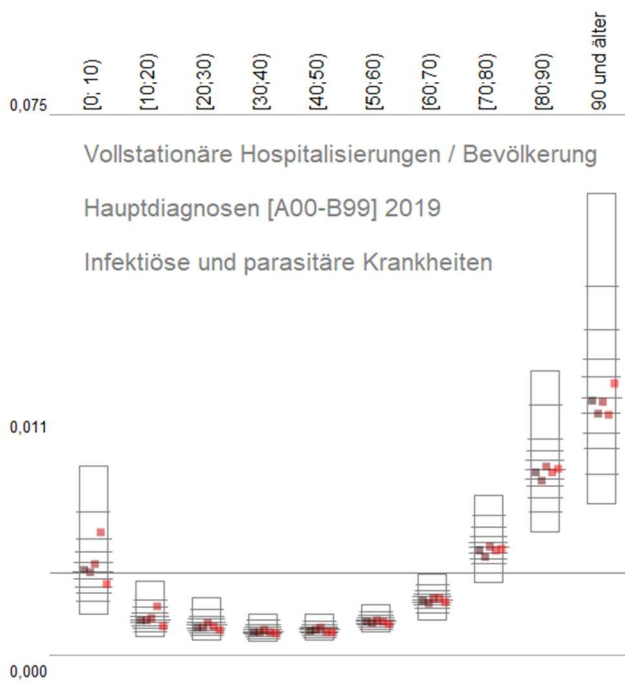
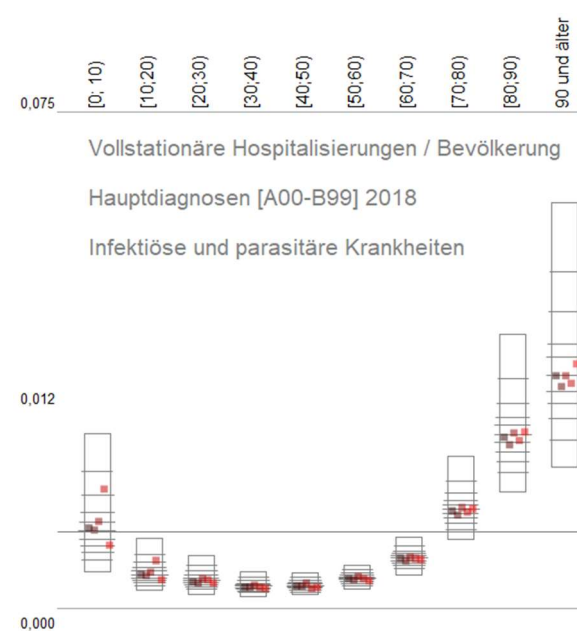
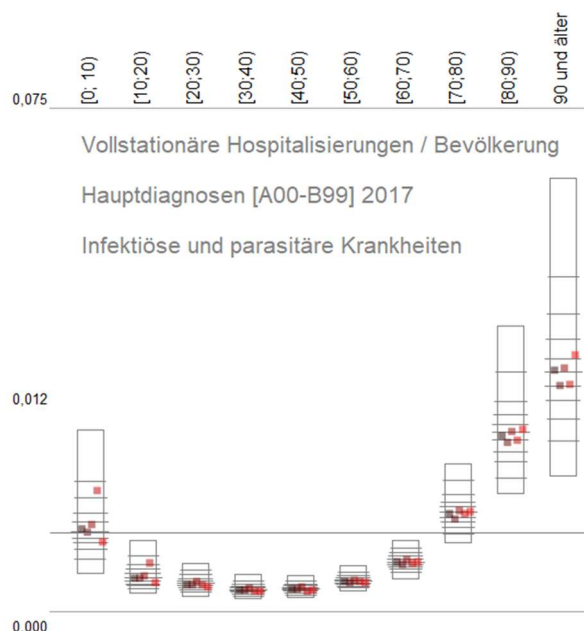
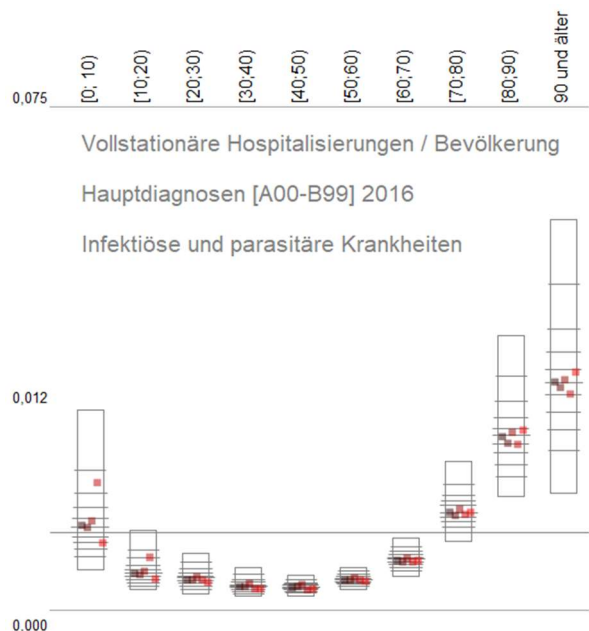
[www.rankingweb.de](http://www.rankingweb.de) Datengrundlage: [www.regionalstatistik.de](http://www.regionalstatistik.de) by-2-0 - GovData





# Vollstationäre Hospitalisierungen nach Hauptdiagnose 2016 bis 2021 – Hauptdiagnose [A00-B99], Infektiöse, parasitäre ..

[www.rankingweb.de](http://www.rankingweb.de) Datengrundlage: [www.regionalstatistik.de](http://www.regionalstatistik.de) by-2-0 - GovData



# Vollstationäre Hospitalisierungen nach Hauptdiagnose 2016 bis 2021 – Hauptdiagnose [E00-E90],

Endokrine, Ernährungs- und Stoffwechselkrankheiten [www.rankingweb.de](http://www.rankingweb.de) Datengrundlage: [www.regionalstatistik.de](http://www.regionalstatistik.de) by-2-0 - GovData

