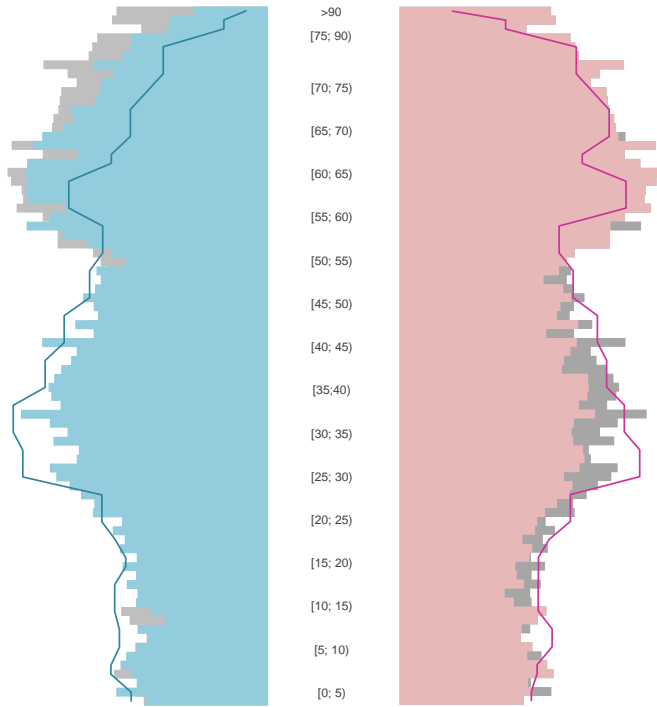
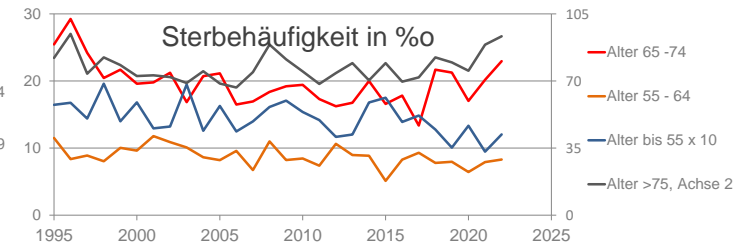
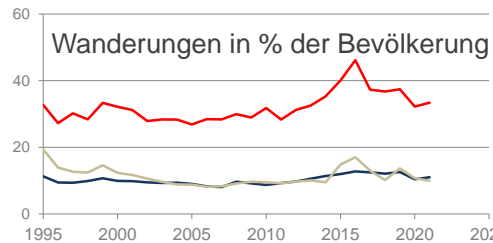
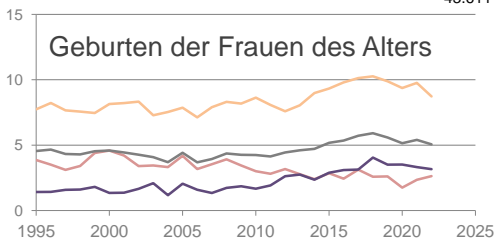


Amberg

2022
42.534

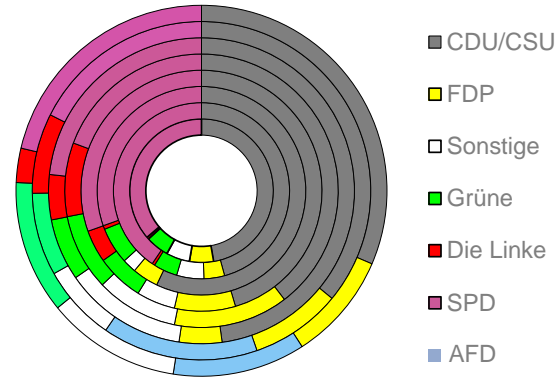


1995
43.611



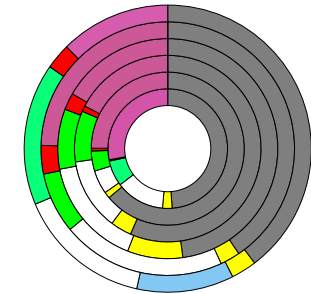
Bundestagswahlergebnisse

1994 bis 2021

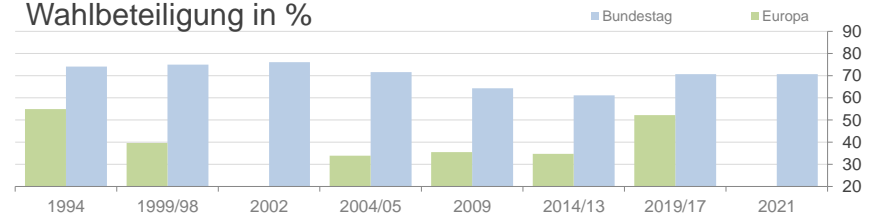


Europawahlergebnisse

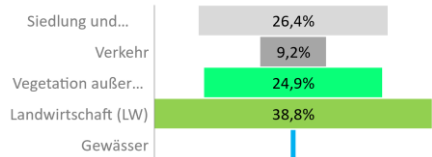
1994 bis 2019



Wahlbeteiligung in %



Flächennutzung 2021



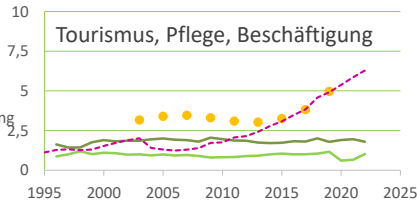
Übernachtungen pro Ankunft

— Gästeankünfte pro Kopf

● Pflegebedürftige in % der Bevölkerung

--- Sozialversicherungspflichtig Beschäftigte [65-75] in %

Tourismus, Pflege, Beschäftigung



Verarbeitendes Gewerbe

