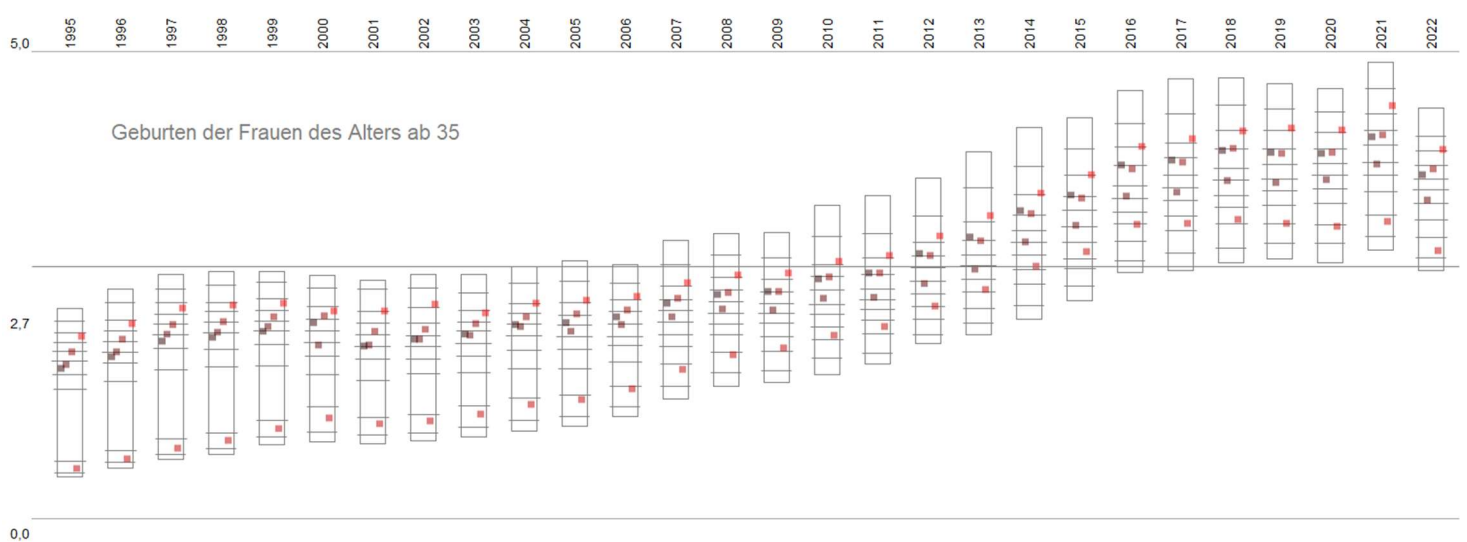
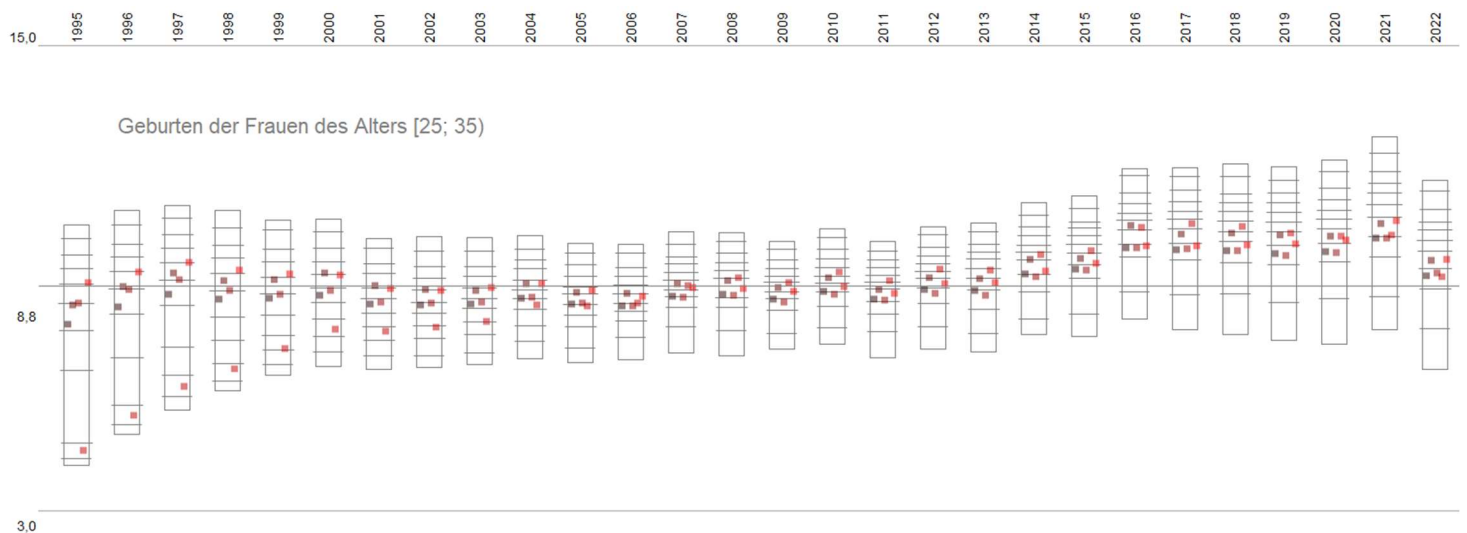
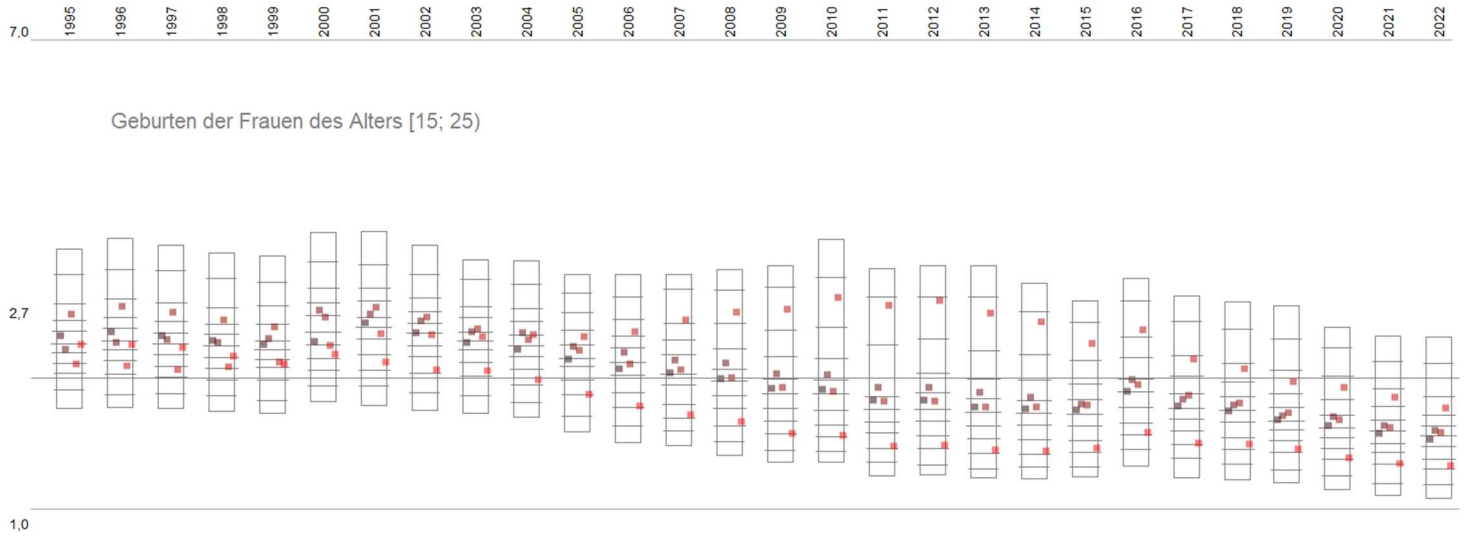
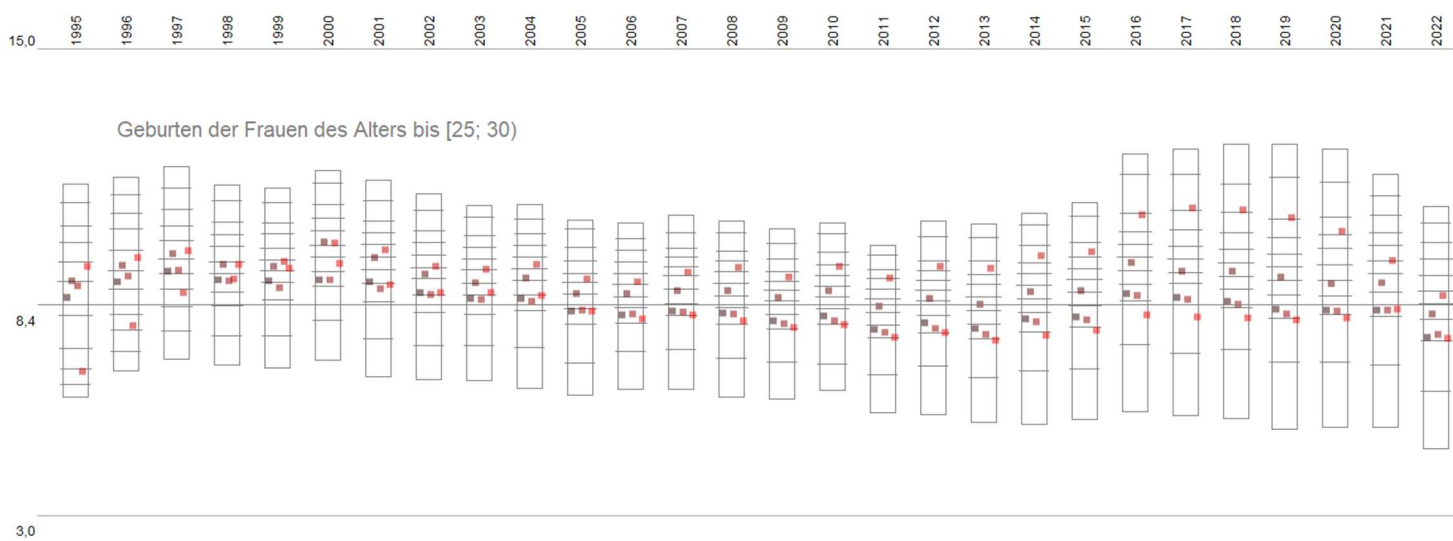
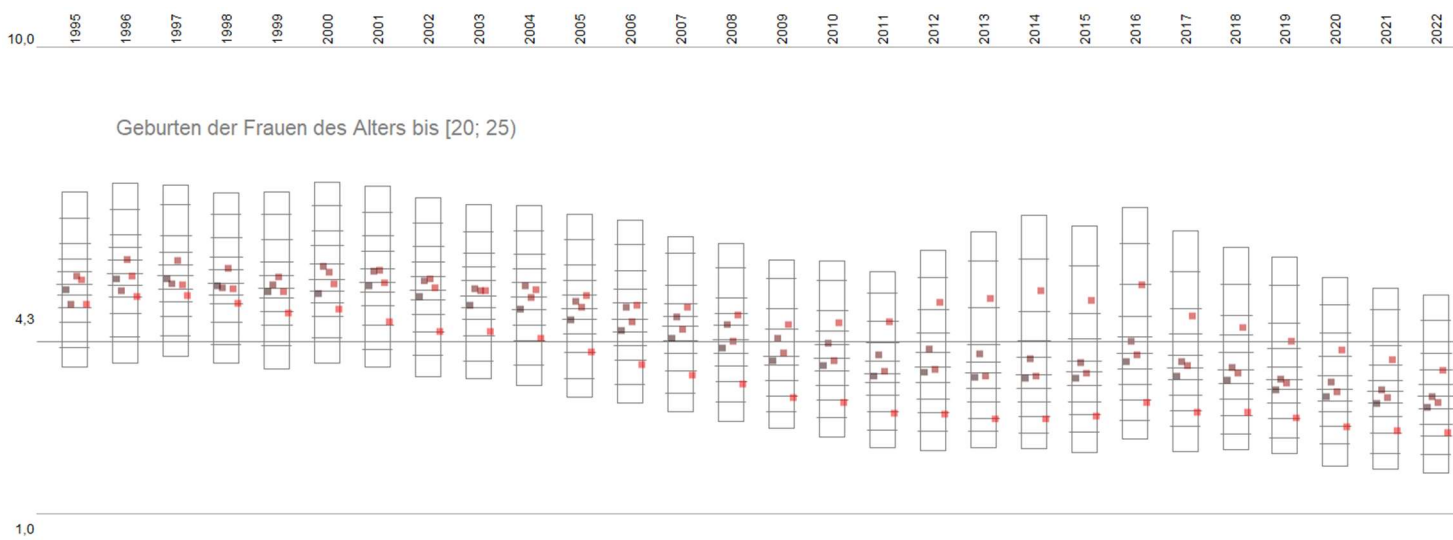
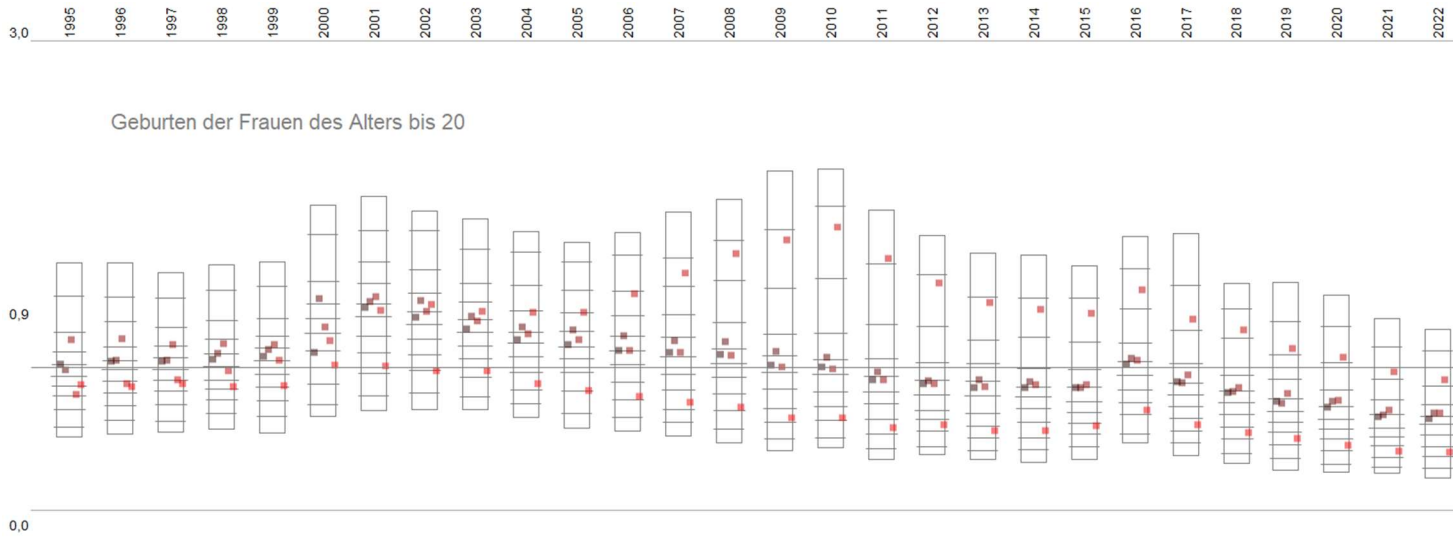
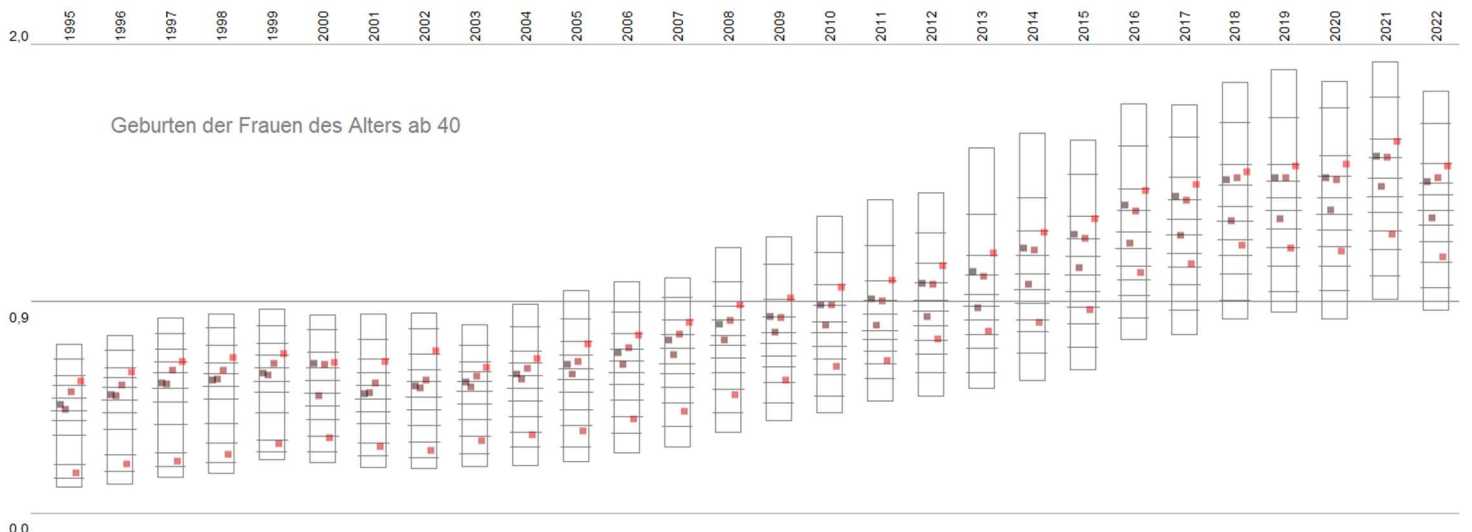
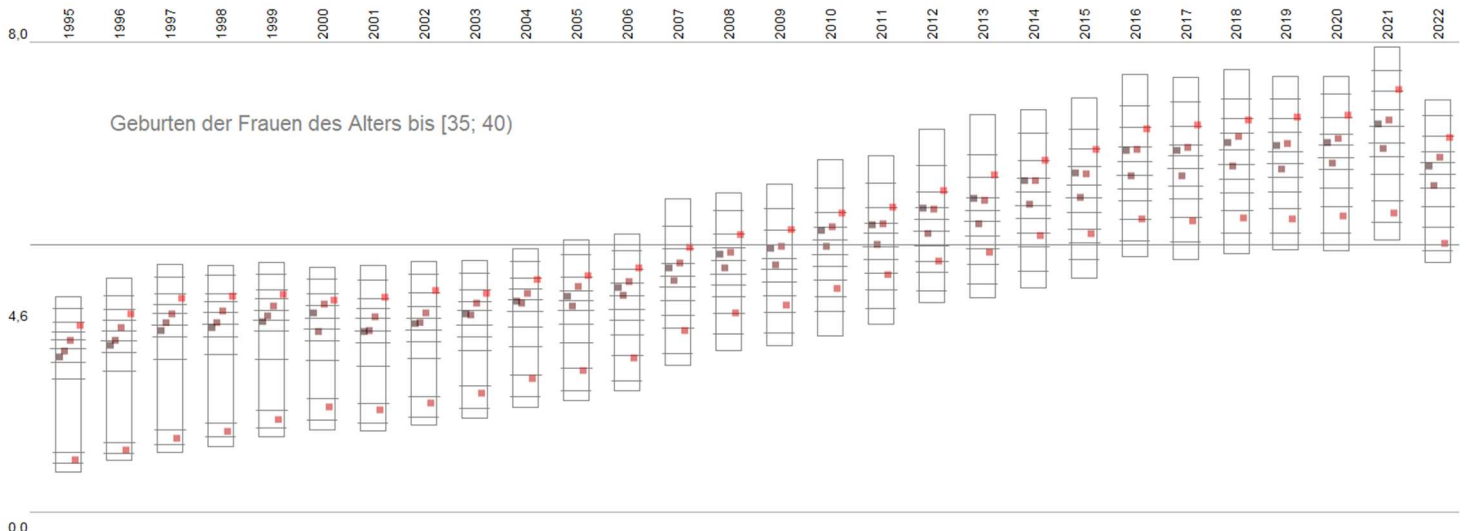
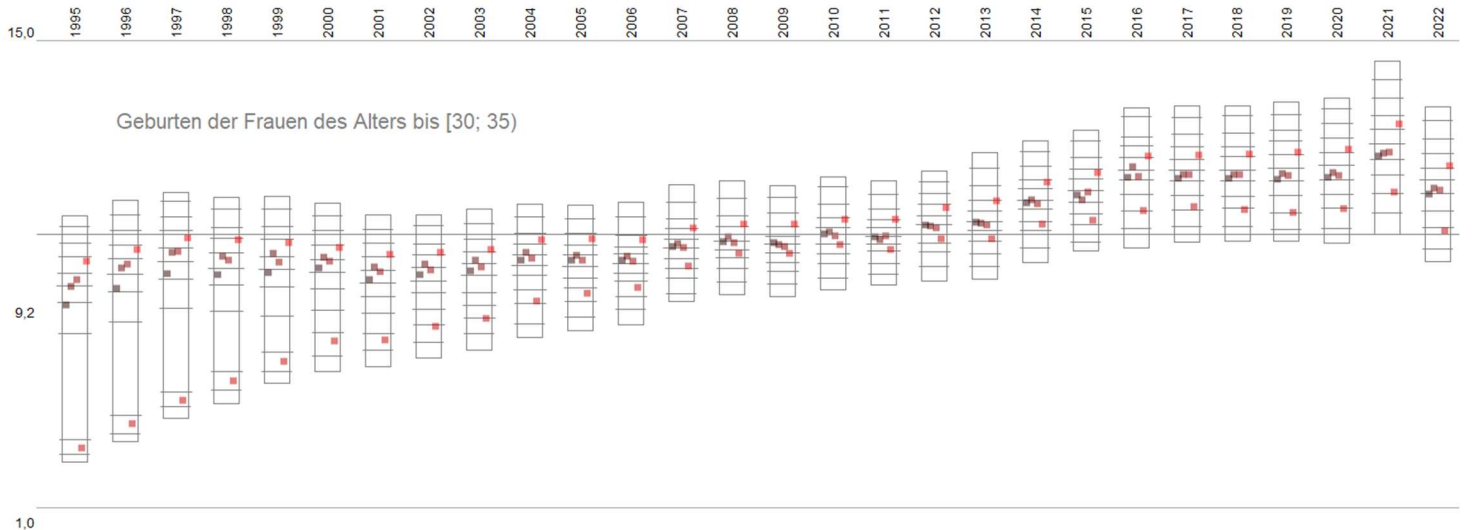


Fertilität

www.rankingweb.de Datengrundlage: www.regionalstatistik.de [by-2-0 - GovData](#)

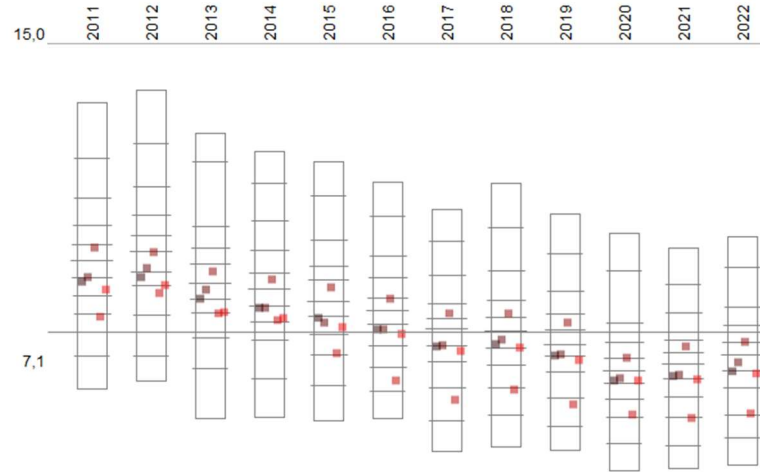




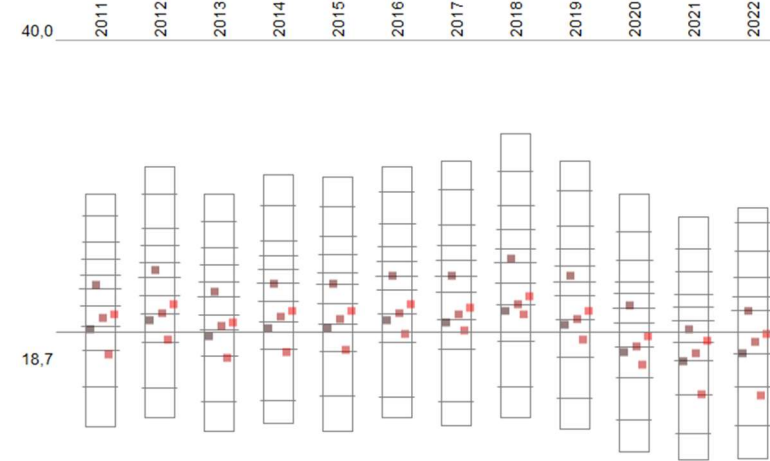


Eheschließungen und Scheidungen

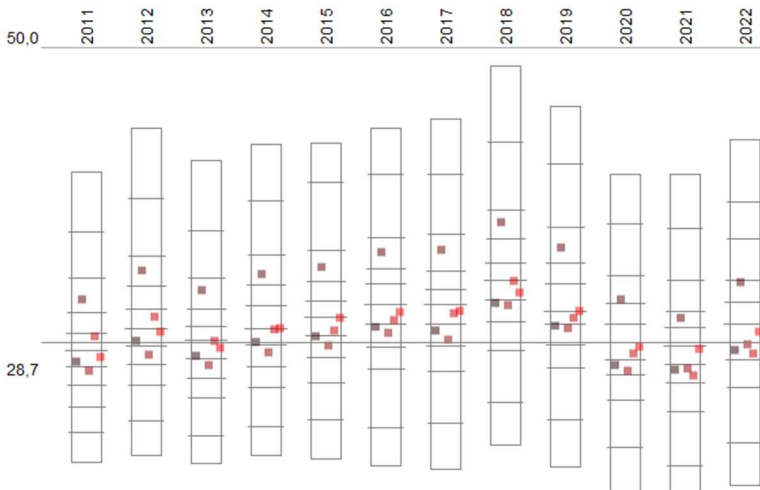
www.rankingweb.de Datengrundlage: www.regionalstatistik.de by-2-0 - GovData



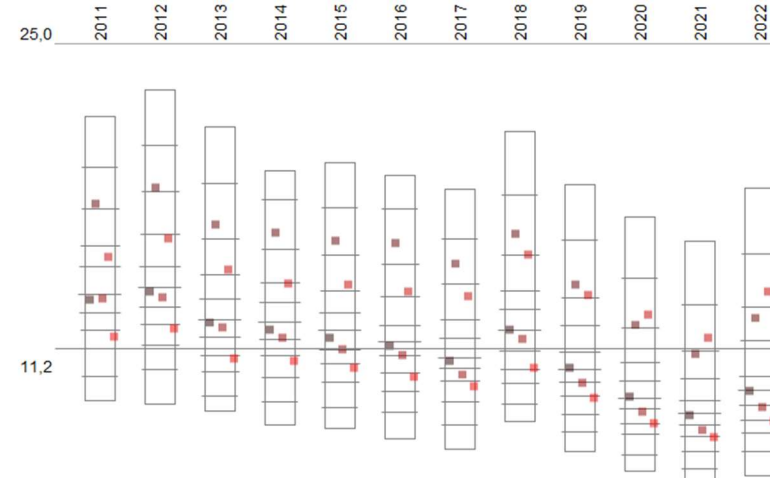
Eheschließende des Alters bis 25 Jahre in %



Eheschließende des Alters [25; 30) Jahre in %



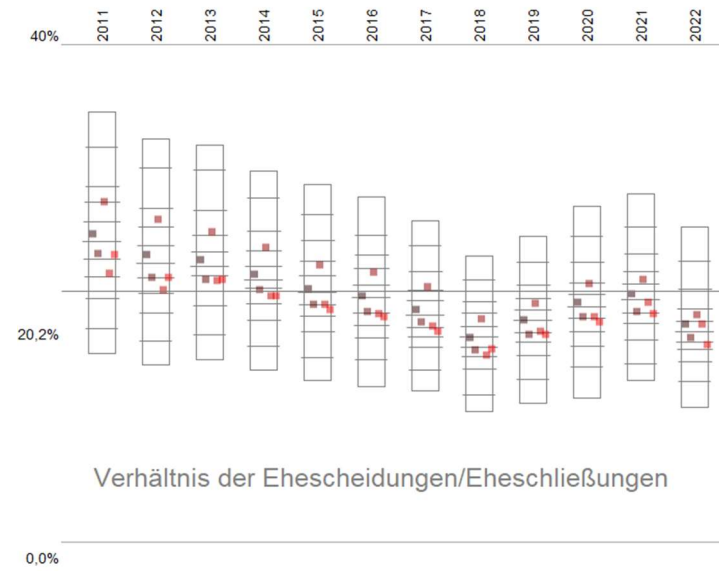
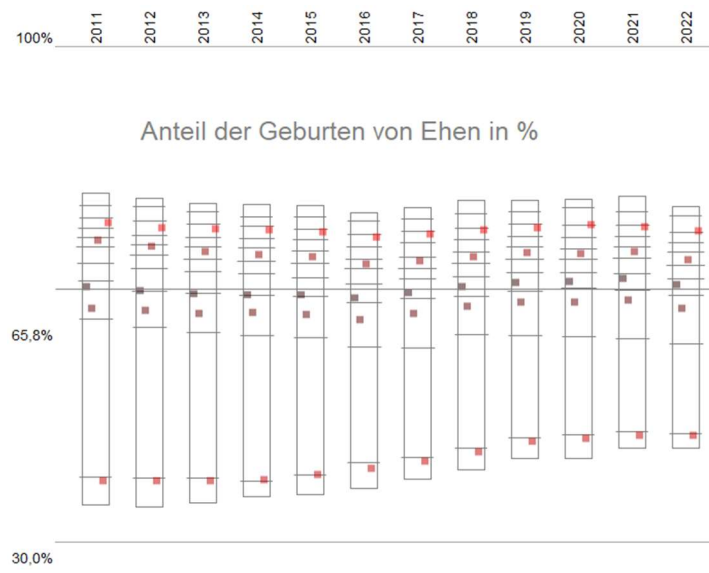
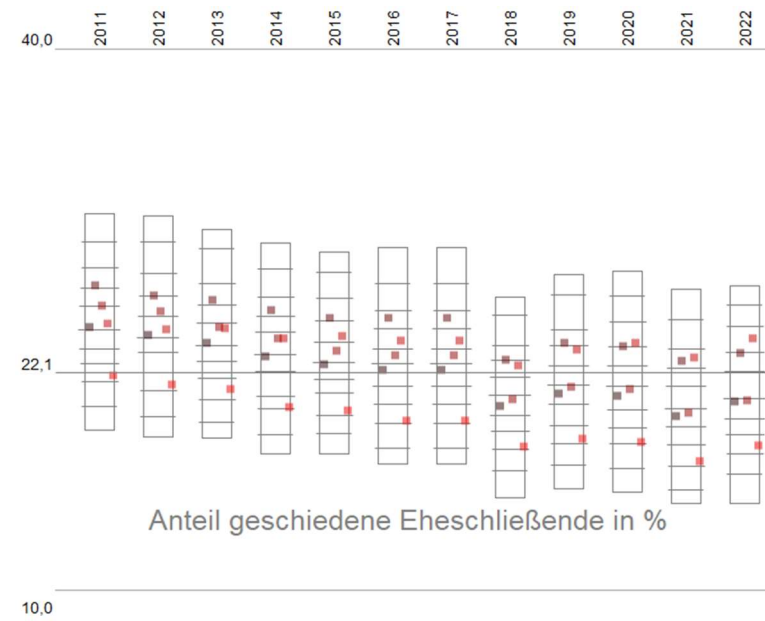
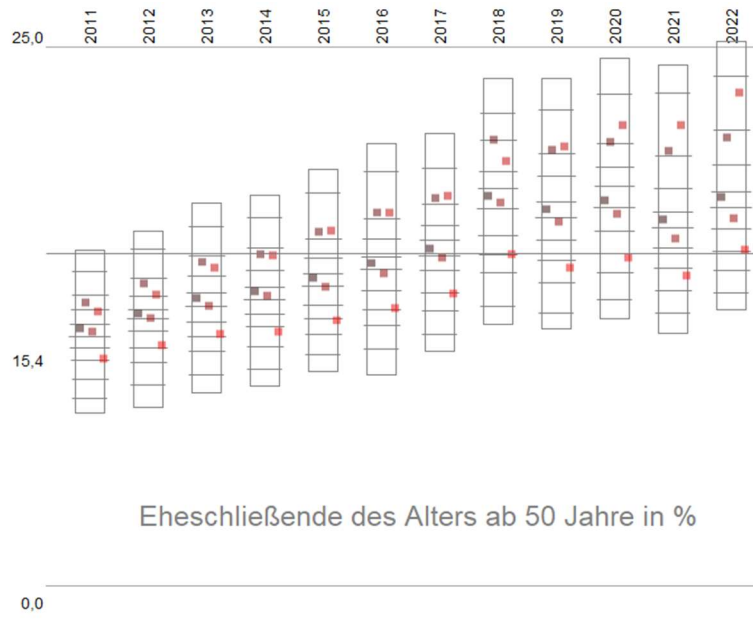
Eheschließende des Alters [30; 40) Jahre in %

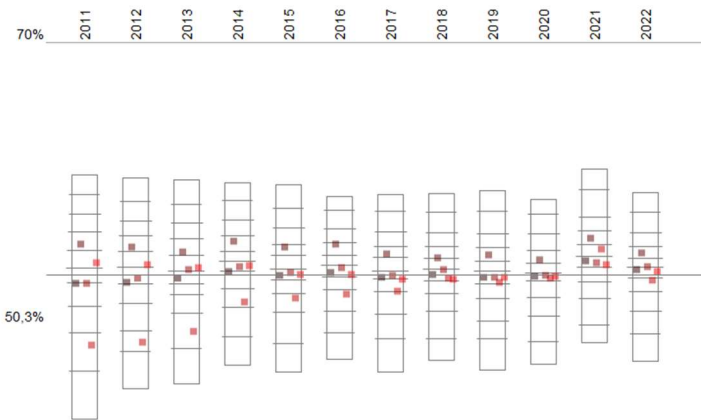


Eheschließende des Alters [40; 50) Jahre in %

10,0

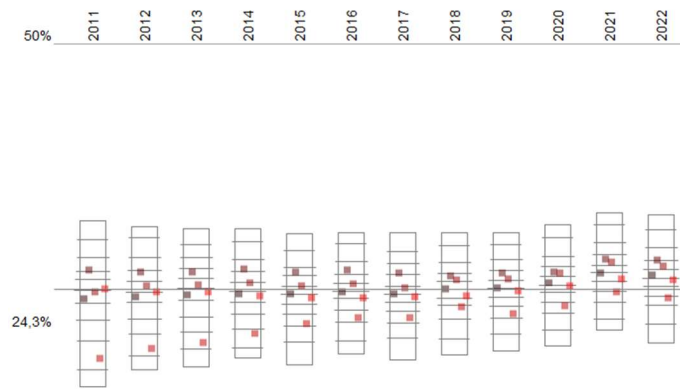
0,0





Verhältnis der Ehescheidungen mit/ohne minderjähriger Kinder

30,0%



Anteil der Ehescheidungen mit 2 oder mehr minderjährigen Kindern

0,0%